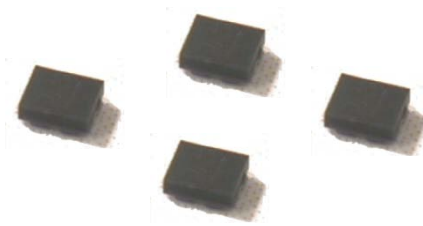




Data Sheet of SAW Components



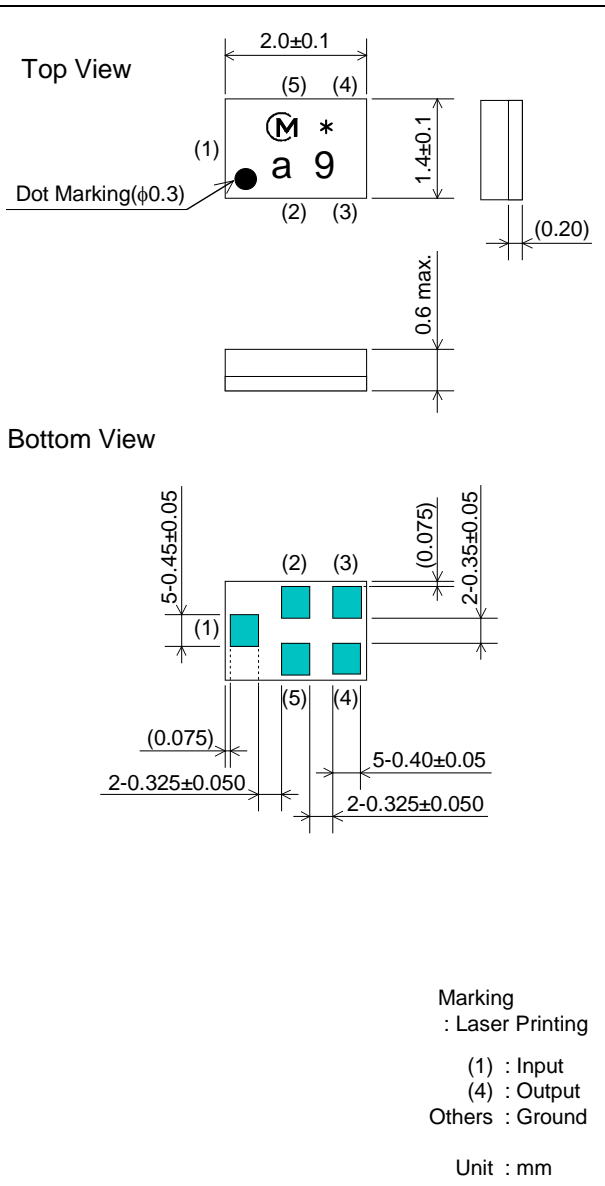
Note : Murata SAW Component is applicable for Cellular /Cordless phone (Terminal) relevant market only.

Please also read caution at the end of this document.

SAW FILTER FOR TD-SCDMA Rx

Murata part number : SAFED2G01AL0F00

Package Dimensions



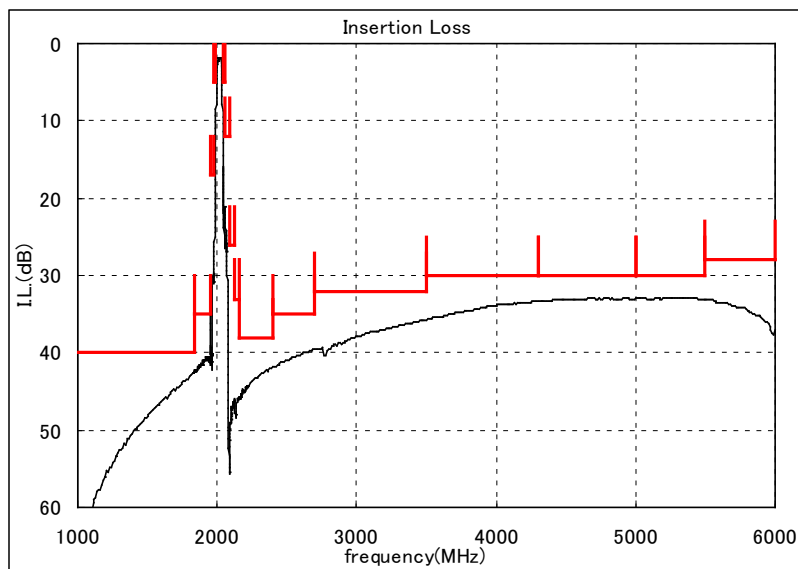
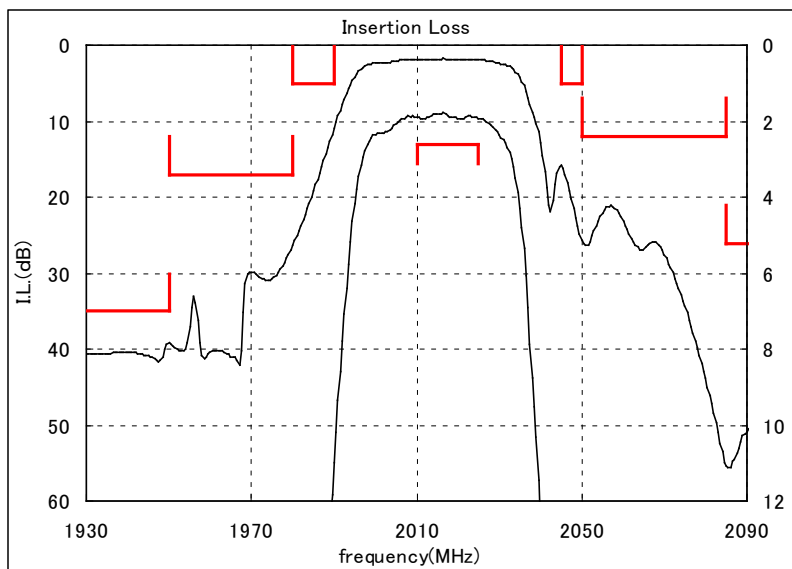
Specification

Item	Specification	
	-30 to +85°C	typ.
Nominal Center Frequency(fc)	2017.5 MHz	
Insertion Loss (2010 to 2025 MHz)	2.6 dB max.	2.0 dB
Absolute Attenuation		
1) 0.1 to 1840 MHz	40 dB min.	43 dB
2) 1840 to 1950 MHz	35 dB min.	40 dB
3) 1950 to 1980 MHz	17 dB min.	26 dB
4) 1980 to 1990 MHz	5 dB min.	10 dB
5) 2045 to 2050 MHz	5 dB min.	19 dB
6) 2050 to 2085 MHz	12 dB min.	19 dB
7) 2085 to 2120 MHz	26 dB min.	46 dB
8) 2120 to 2160 MHz	33 dB min.	46 dB
9) 2160 to 2400 MHz	38 dB min.	42 dB
10) 2400 to 2700 MHz	35 dB min.	40 dB
11) 2700 to 3500 MHz	32 dB min.	36 dB
12) 3500 to 4300 MHz	30 dB min.	35 dB
13) 4300 to 5000 MHz	30 dB min.	34 dB
14) 5000 to 5500 MHz	30 dB min.	34 dB
15) 5500 to 6000 MHz	28 dB min.	34 dB
Ripple Deviation (2010 to 2025 MHz)	1.1 dB max.	0.2 dB
VSWR (2010 to 2025 MHz)	2.1 max.	1.2
Input/Output Impedance (nominal)	50Ω	
Input Signal Level	20mW (+13dBm), 2000 hours	

SAW FILTER FOR TD-SCDMA Rx

Murata part number : SAFED2G01AL0F00

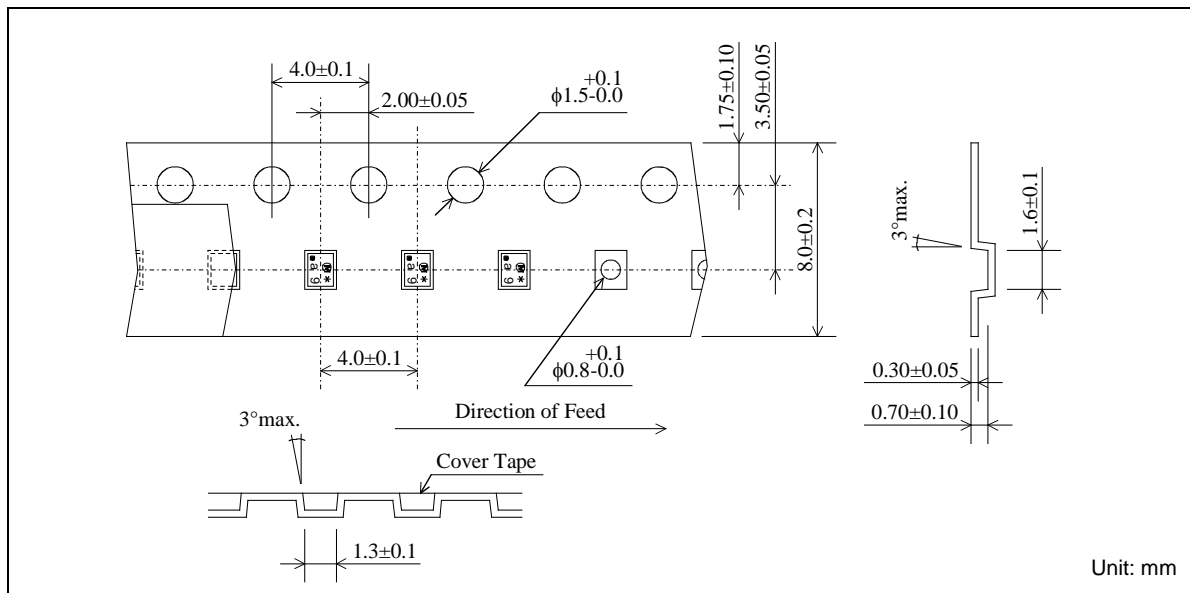
Frequency Performance



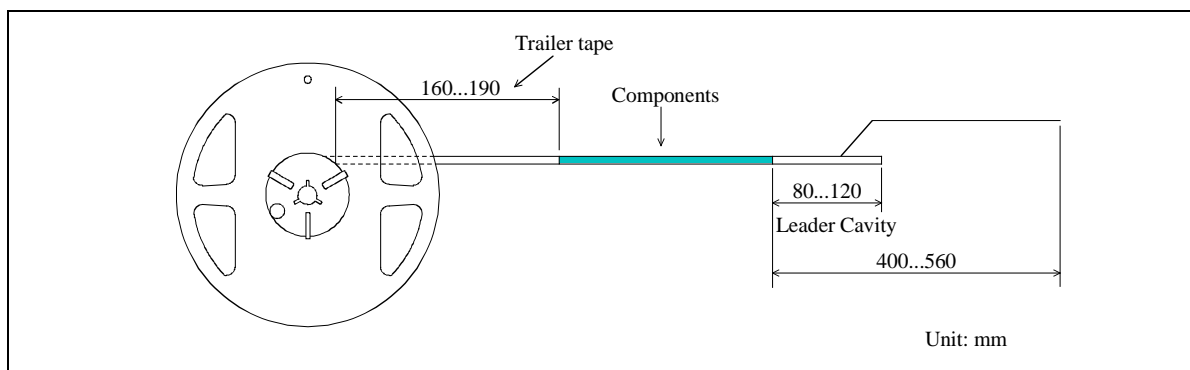
SAW FILTER FOR TD-SCDMA Rx

Murata part number : SAFED2G01AL0F00

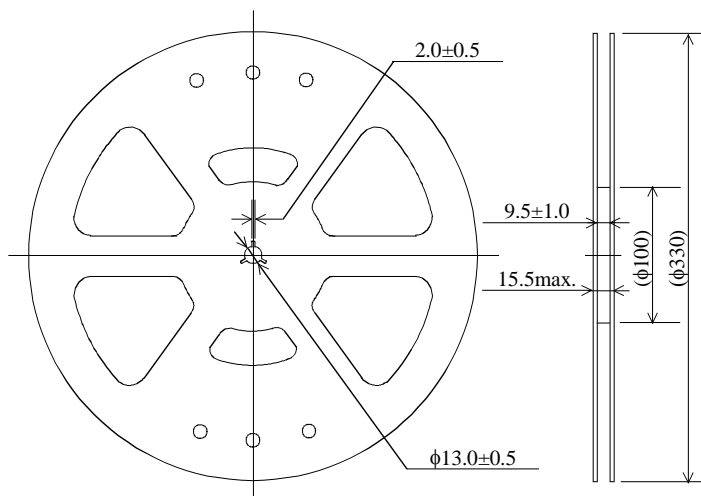
Dimensions of Carrier Tape



Dimensions of Tape



Dimensions of Reel



Unit: mm

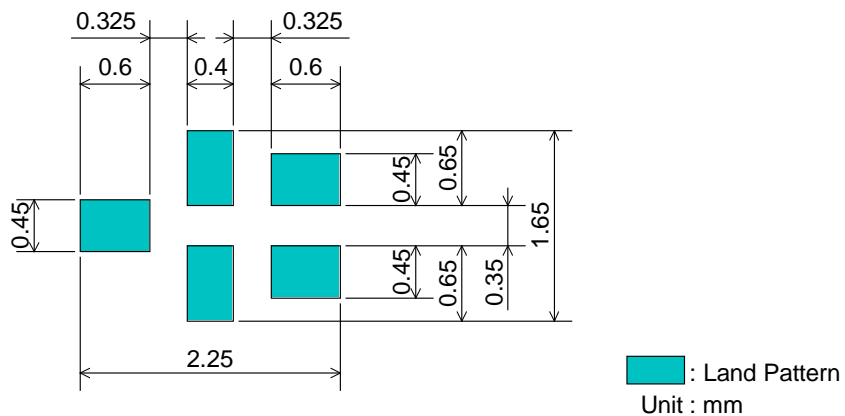
SAFED2G01AL0F00R00 ... 10000pcs/reel
SAFED2G01AL0F00R05 ... 5000pcs/reel

SAW FILTER FOR TD-SCDMA Rx

Murata part number : SAFED2G01AL0F00

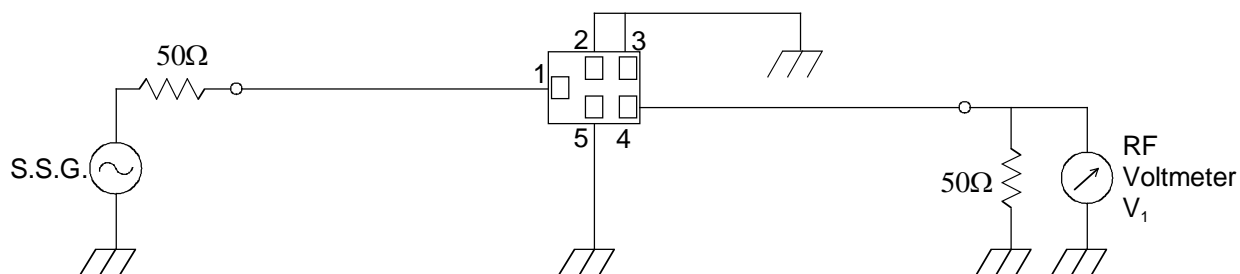
Recommended Land Pattern

Top View



Test Circuit

Bottom View



SAW FILTER FOR TD-SCDMA Rx

Murata part number : SAFED2G01AL0F00

■ RoHS Compliance

This component is compliant with RoHS directive.

This component was always RoHS compliant from the first date of manufacture.

• Caution - Limitation of Applications

This product is intended for the following applications only; however, please do not use this product in these applications where defects might directly cause damage to a third party's life, body or property.

- a. Mobile Telephone
- b. Cordless phone (except for Automotive use)
- c. PC (Including Notebook PC, Netbook PC, Tablet)
- d. Game
- e. Camera (except for Business/security use)
- f. Set Top Box
- g. Electronic dictionary
- h. Digital audio equipment

• This catalog is for reference only and not an official product specification document, therefore, please review and approve our official product specification before ordering this product.