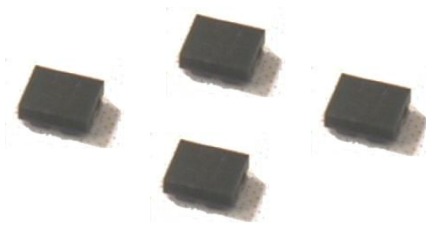




Data Sheet of SAW Components



Note : Murata SAW Component is applicable for Cellular /Cordless phone (Terminal) relevant market only.

Please also read caution at the end of this document.

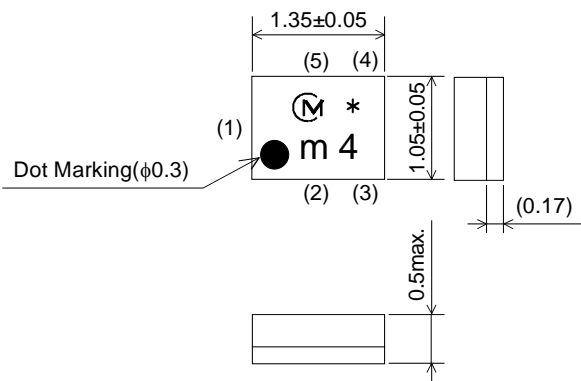
SAW FILTER FOR Band1 Tx

Murata part number : SAFEA1G95AL7F00

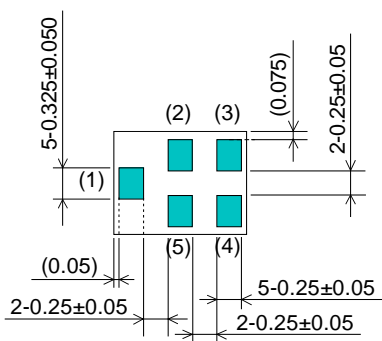
■ Package Dimensions

■ Specification

Top View



Bottom View



Marking
: Laser Printing

(1) : Unbalance Port
(4) : Unbalance Port
Others : Ground

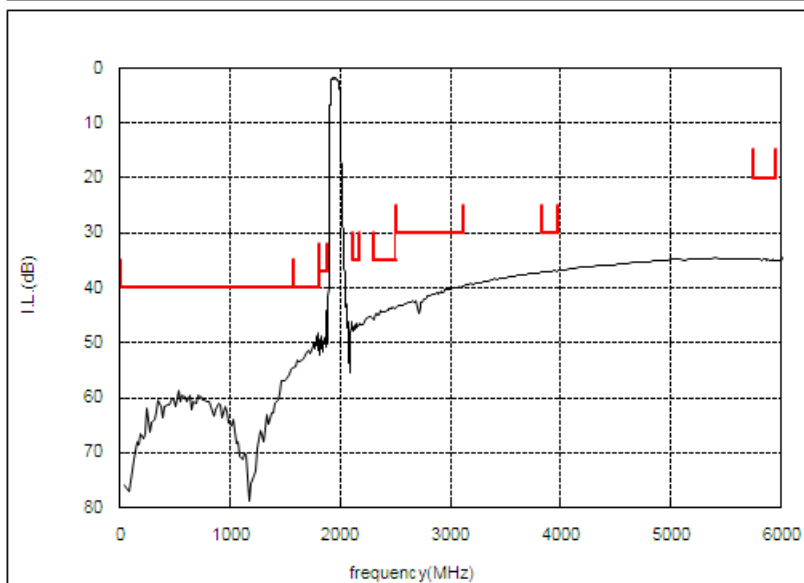
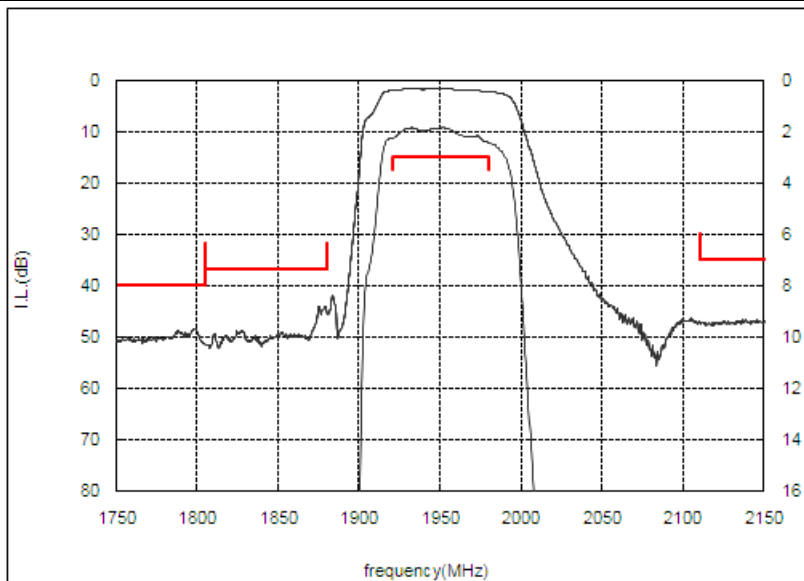
Unit : mm

Item	Specification		
	-30 to 85°C	25±2°C	typ.
Nominal Center Frequency(fc)	1950MHz		
Insertion Loss (1920 to 1980MHz)	3.0 dB max.	2.8 dB max.	2.5 dB
Absolute Attenuation			
1) 0.3 to 1570 MHz	40 dB min.	40 dB min.	55 dB
2) 1570 to 1805 MHz	40 dB min.	40 dB min.	48 dB
3) 1805 to 1880 MHz	37 dB min.	37 dB min.	44 dB
4) 2110 to 2170 MHz	35 dB min.	35 dB min.	46 dB
5) 2300 to 2500 MHz	35 dB min.	35 dB min.	43 dB
6) 2500 to 3120 MHz	30 dB min.	30 dB min.	39 dB
7) 3830 to 3970 MHz	30 dB min.	30 dB min.	37 dB
8) 5750 to 5950 MHz	20 dB min.	20 dB min.	34 dB
9) 7670 to 7930 MHz	20 dB min.	20 dB min.	26 dB
Ripple Deviation (1920 to 1980MHz)	2.0 dB max.	1.8 dB max.	0.6 dB
VSWR (1920 to 1980MHz)	2.0 max.	2.0 max.	1.5
Unbalance Port Matching Impedance (nominal)	50Ω		
Input Signal Level	20mW (+13dBm), 2000 hours		

SAW FILTER FOR Band1 Tx

Murata part number : SAFEA1G95AL7F00

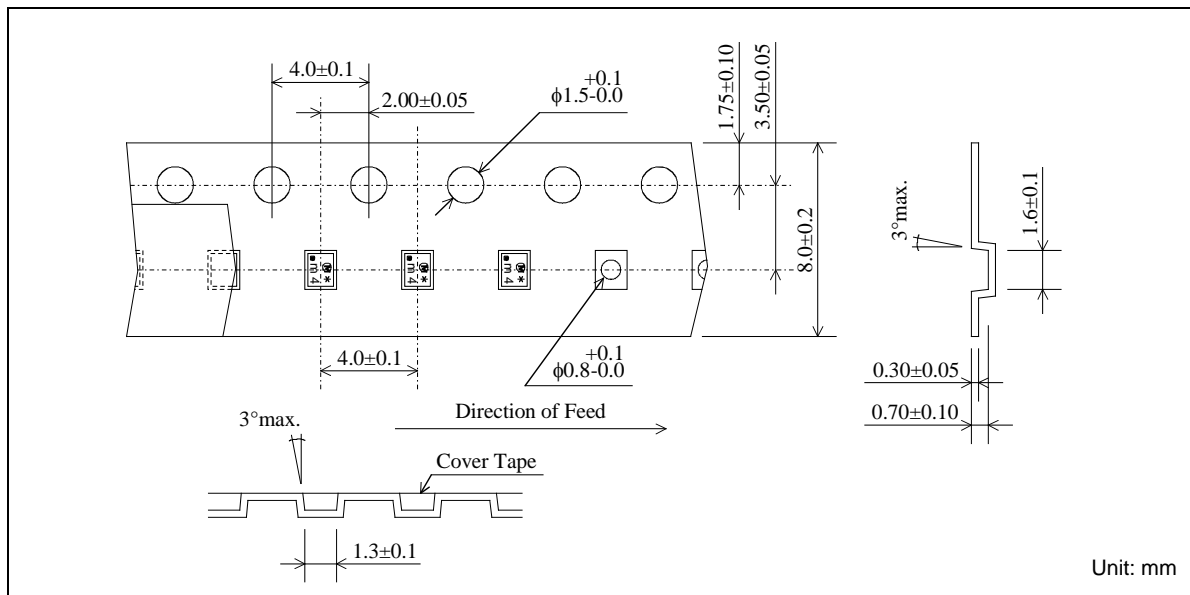
Frequency Performance



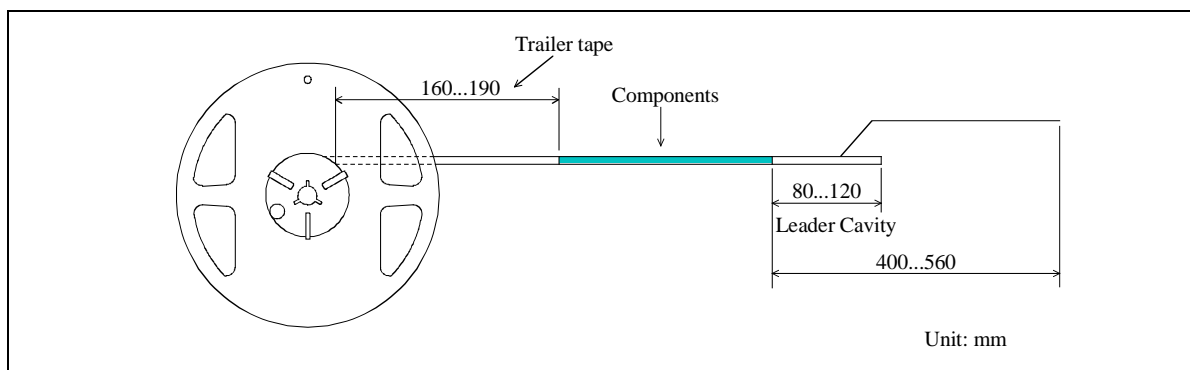
SAW FILTER FOR Band1 Tx

Murata part number : SAFEA1G95AL7F00

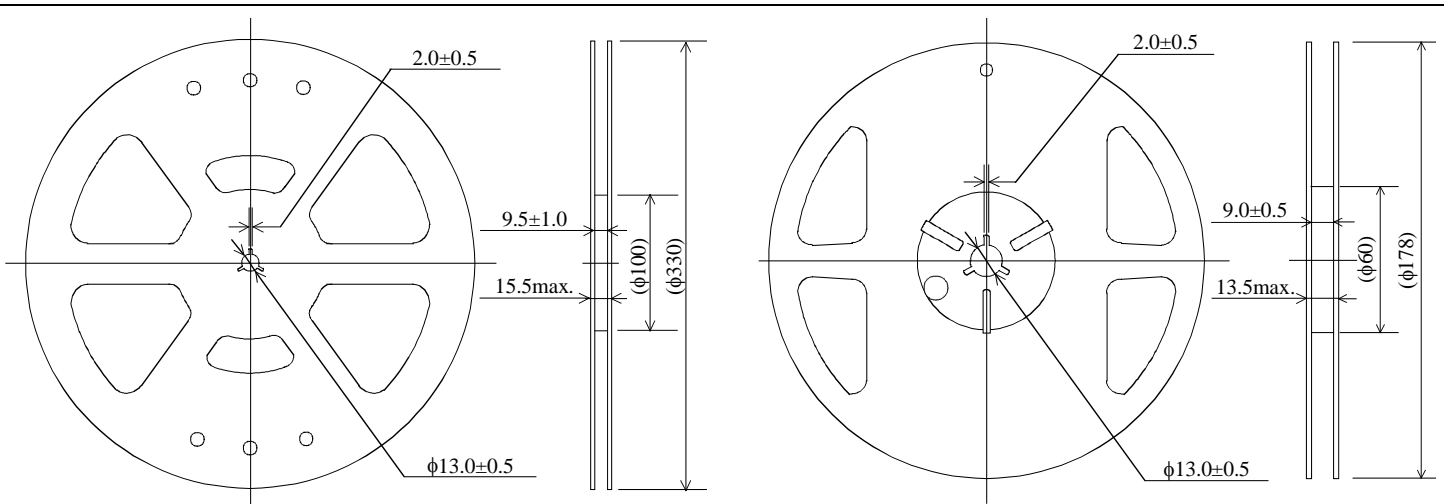
Dimensions of Carrier Tape



Dimensions of Tape



Dimensions of Reel



SAFEA1G95AL7F00R00 ... 10000pcs/reel

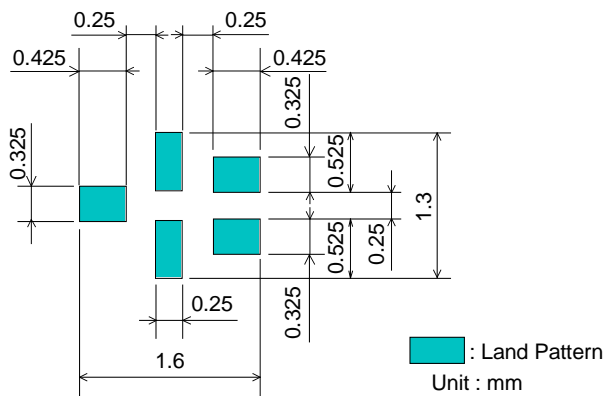
SAFEA1G95AL7F00R15 ... 5000pcs/reel

SAW FILTER FOR Band1 Tx

Murata part number : SAFEA1G95AL7F00

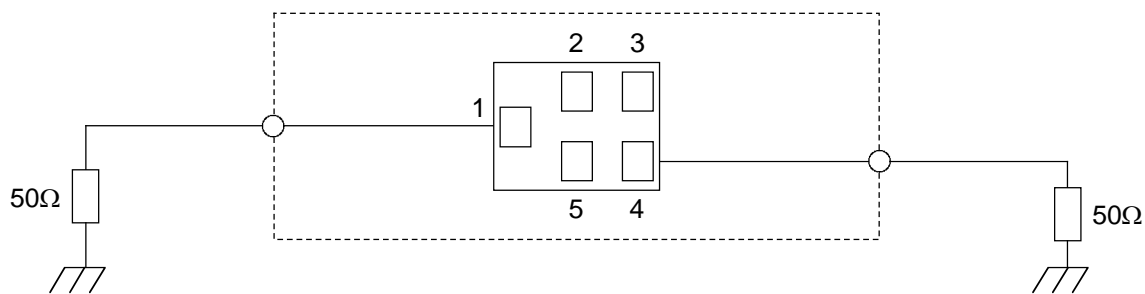
Recommended Land Pattern

Top View



Test Circuit

Bottom View



SAW FILTER FOR Band1 Tx

Murata part number : SAFEA1G95AL7F00

■ RoHS Compliance

This component is compliant with RoHS directive.

This component was always RoHS compliant from the first date of manufacture.

• Caution - Limitation of Applications

This product is intended for the following applications only; however, please do not use this product in these applications where defects might directly cause damage to a third party's life, body or property.

- a. Mobile Telephone
- b. Cordless phone (except for Automotive use)
- c. PC (Including Notebook PC, Netbook PC, Tablet)
- d. Game
- e. Camera (except for Business/security use)
- f. Set Top Box
- g. Electronic dictionary
- h. Digital audio equipment

• This catalog is for reference only and not an official product specification document, therefore, please review and approve our official product specification before ordering this product.