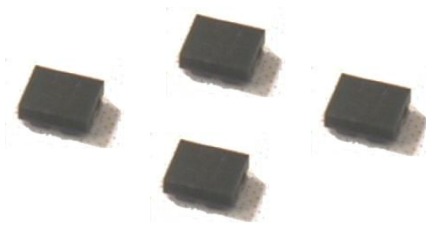




# Data Sheet of SAW Components



Note : Murata SAW Component is applicable for Cellular /Cordless phone (Terminal) relevant market only.

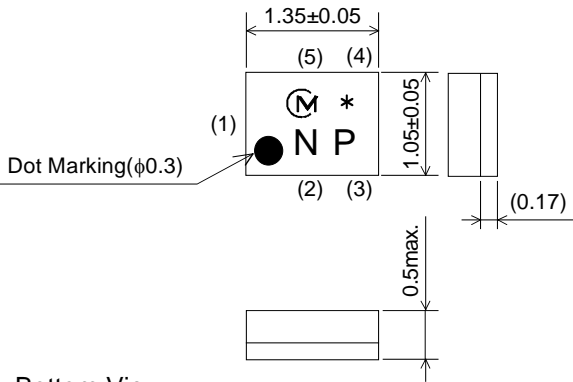
Please also read caution at the end of this document.

# SAW FILTER FOR JCDMA Rx Top

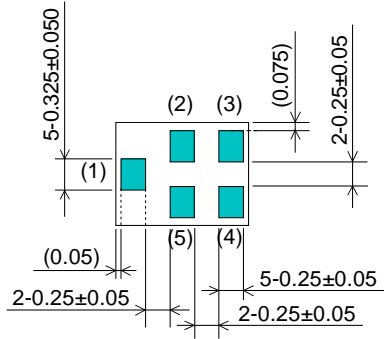
Murata part number : SAFEA859MCL0F00

## Package Dimensions

Top View



Bottom View



Marking  
: Laser Printing

(1) : Input  
(3)(4) : Output  
Others : Ground

Unit : mm

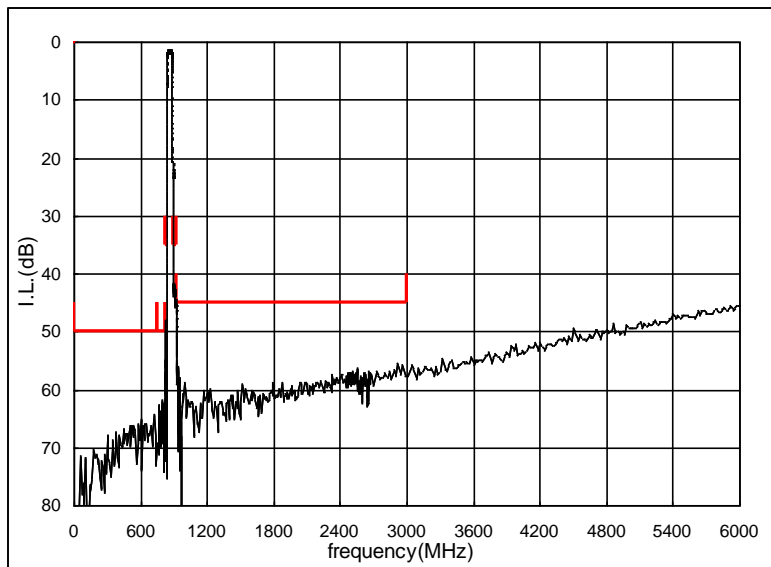
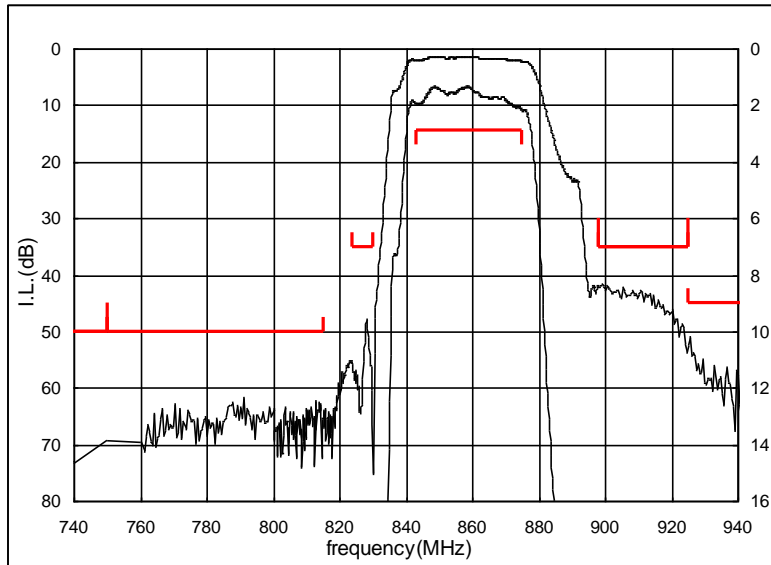
## Specification

Item	Specification		
	-30 to 85°C	25±2°C	typ.
Nominal Center Frequency(fc)	859MHz		
Insertion Loss (843 to 875MHz)	2.9 dB max.	2.8 dB max.	2.2 dB
Absolute Attenuation			
1) 0 to 750 MHz	50 dB min.	50 dB min.	63 dB
2) 750 to 815 MHz	50 dB min.	50 dB min.	60 dB
3) 824 to 830 MHz	35 dB min.	35 dB min.	49 dB
4) 898 to 925 MHz	35 dB min.	35 dB min.	41 dB
5) 925 to 3000 MHz	45 dB min.	45 dB min.	51 dB
Ripple Deviation (843 to 875MHz)	2.0dB max.	1.8dB max.	0.8 dB
VSWR (843 to 875MHz)	2.3 max.	2.2 max.	1.9
Amplitude Balance (843 to 875MHz)	±1.0dB max.	±0.8dB max.	-0.4dB
Phase Balance (843 to 875MHz)	180±10deg. max.	180±8deg. max.	180-2.5deg.
Input Impedance (nominal)	50Ω		
Output Impedance (nominal)	100Ω		
Input Signal Level	31.6mW (+15dBm), 2000 hours		

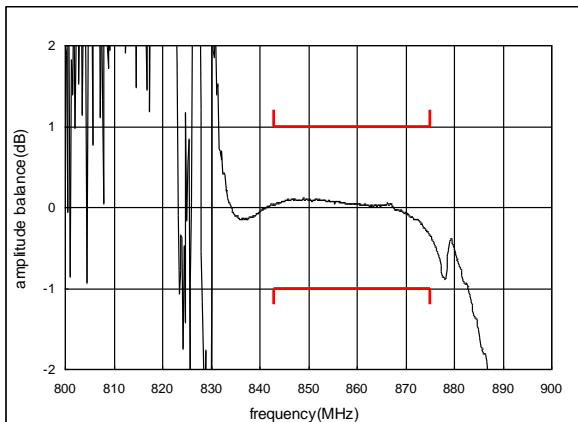
# SAW FILTER FOR JCDMA Rx Top

Murata part number : SAFEA859MCL0F00

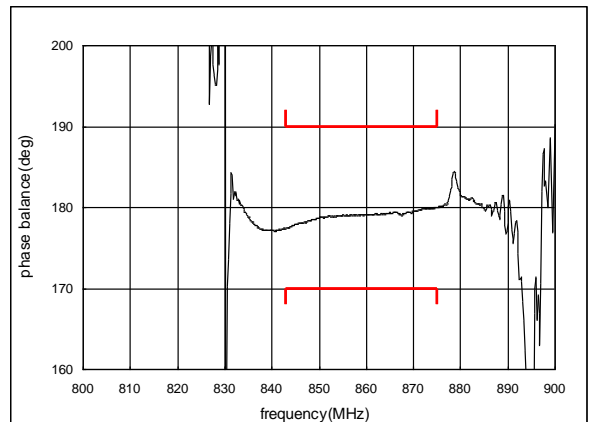
## Frequency Performance



Amplitude balance



Phase balance



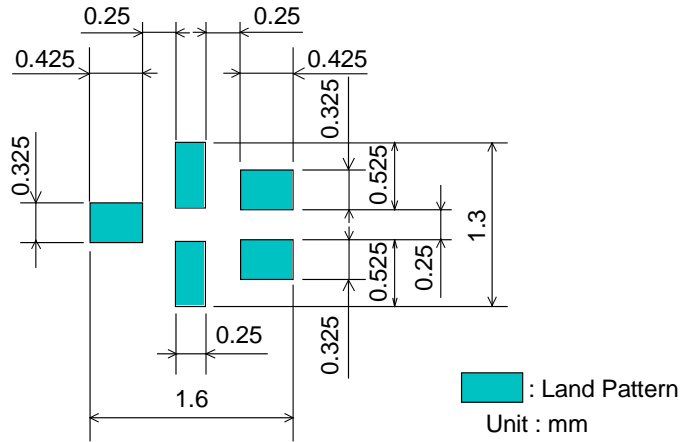


# SAW FILTER FOR JCDMA Rx Top

Murata part number : SAFEA859MCL0F00

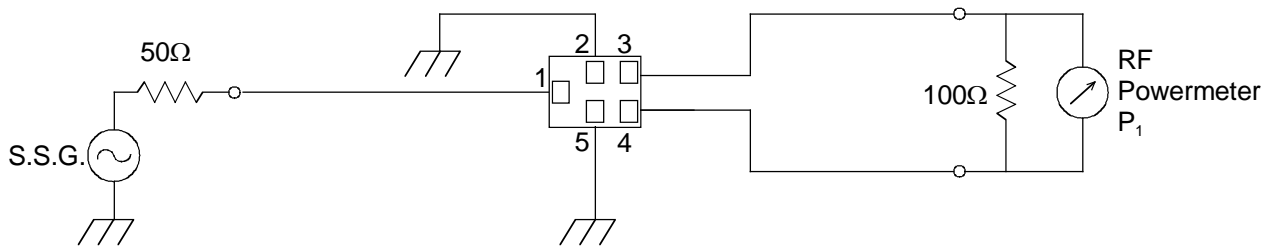
## Recommended Land Pattern

Top View



## Test Circuit

Bottom View



# SAW FILTER FOR JCDMA Rx Top

Murata part number : SAFEA859MCL0F00

## ■ RoHS Compliance

This component is compliant with RoHS directive.

This component was always RoHS compliant from the first date of manufacture.

### • Caution - Limitation of Applications

This product is intended for the following applications only; however, please do not use this product in these applications where defects might directly cause damage to a third party's life, body or property.

- a. Mobile Telephone
- b. Cordless phone (except for Automotive use)
- c. PC (Including Notebook PC, Netbook PC, Tablet)
- d. Game
- e. Camera (except for Business/security use)
- f. Set Top Box
- g. Electronic dictionary
- h. Digital audio equipment

• This catalog is for reference only and not an official product specification document, therefore, please review and approve our official product specification before ordering this product.