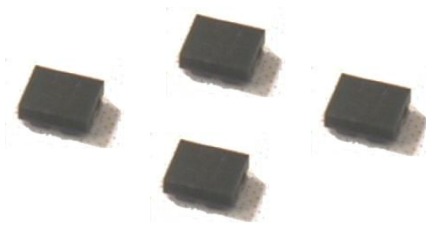




Data Sheet of SAW Components



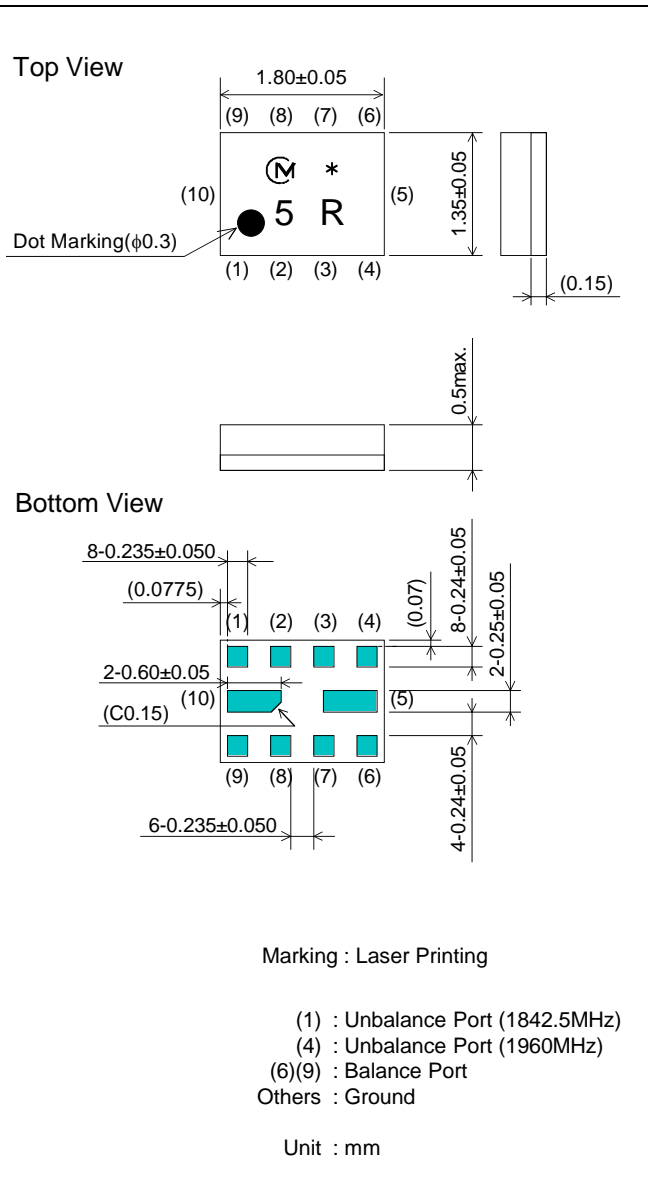
Note : Murata SAW Component is applicable for Cellular /Cordless phone (Terminal) relevant market only.
Please also read caution at the end of this document.

SAW FILTER FOR GSM1800/1900

Murata part number : SAWEN1G84BH0F00 (fc=1842.5MHz)

Package Dimensions

Specification

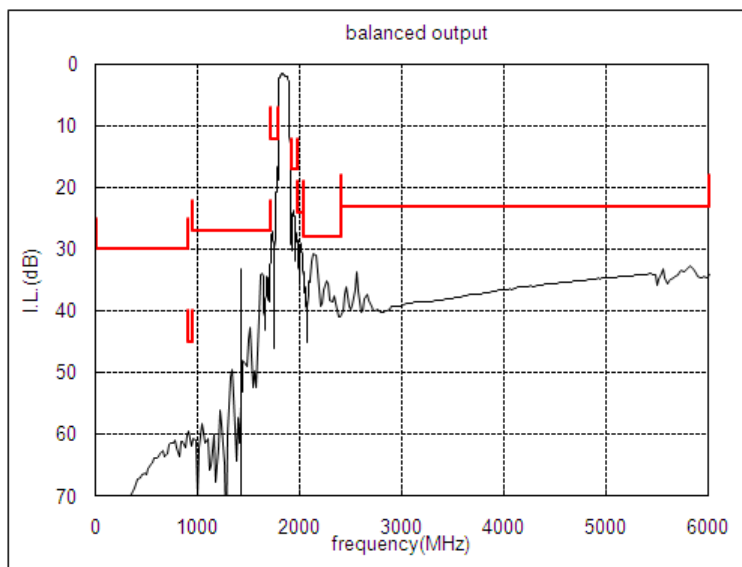
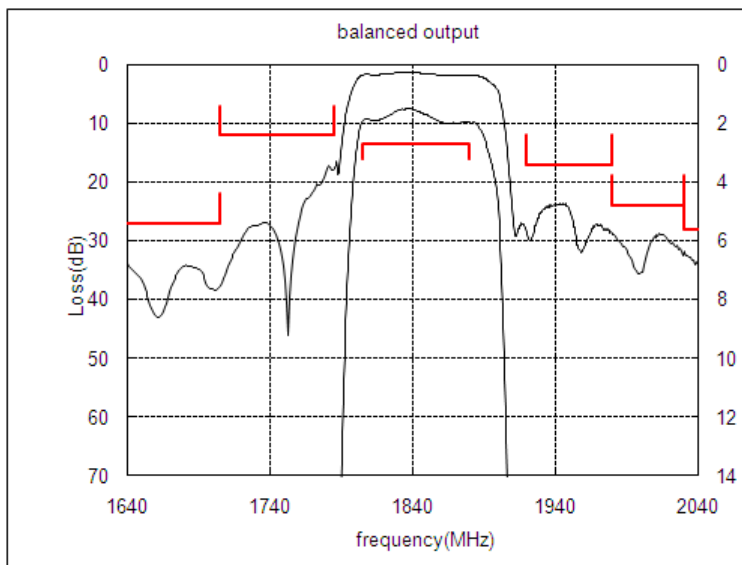


Item	Specification			
	-30 to 85°C	-20 to 85°C	25±2°C	typ.
Nominal Center Frequency(fc)	1842.5MHz			
Insertion Loss (1805 to 1880 MHz)	2.7 dB max.	2.7 dB max.	2.5 dB max.	2.2 dB
Absolute Attenuation				
1) 0.1 to 902 MHz	30 dB min.	30 dB min.	30 dB min.	60 dB
2) 902 to 940 MHz	45 dB min.	45 dB min.	45 dB min.	58 dB
3) 940 to 1705 MHz	27 dB min.	27 dB min.	27 dB min.	32 dB
4) 1705 to 1785 MHz	12 dB min.	12 dB min.	13 dB min.	17 dB
5) 1920 to 1980 MHz	17 dB min.	17 dB min.	20 dB min.	25 dB
6) 1980 to 2030 MHz	24 dB min.	24 dB min.	24 dB min.	28 dB
7) 2030 to 2400 MHz	28 dB min.	28 dB min.	28 dB min.	31 dB
8) 2400 to 6000 MHz	23 dB min.	23 dB min.	23 dB min.	33 dB
Ripple Deviation (1805 to 1880 MHz)	1.4 dB max.	1.4 dB max.	1.2 dB max.	0.8 dB
VSWR (1805 to 1880 MHz)	2.2 max.	2.2 max.	2.1 max.	1.9
Amplitude Balance (1805 to 1880 MHz)	±1.2dB max.	±1.2dB max.	±1.2dB max.	±0.7dB
Phase Balance (1805 to 1880 MHz)	180±10deg. max.	180±10deg. max.	180±10deg.	180±3deg.
Unbalance Port Matching Impedance (nominal)	50Ω			
Balance Port Matching Impedance (nominal)	150Ω//8.2nH			
Input Signal Level	20mW (+13dBm), 2000 hours			

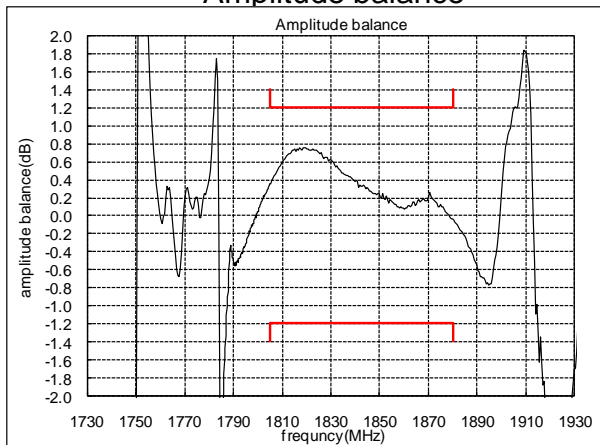
SAW FILTER FOR GSM1800/1900

Murata part number : SAWEN1G84BH0F00 (fc=1842.5MHz)

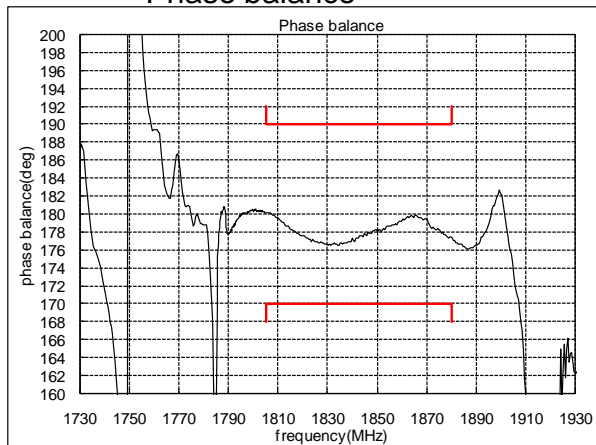
Frequency Performance



Amplitude balance



Phase balance

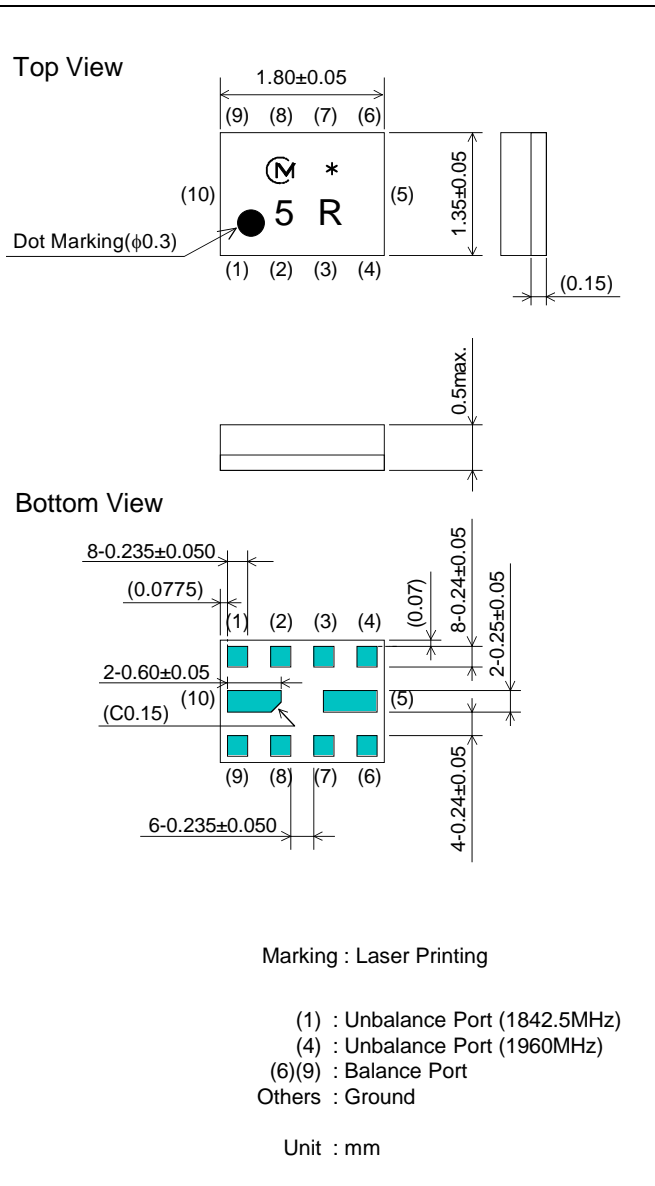


SAW FILTER FOR GSM1800/1900

Murata part number : SAWEN1G84BH0F00 (fc=1960MHz)

Package Dimensions

Specification

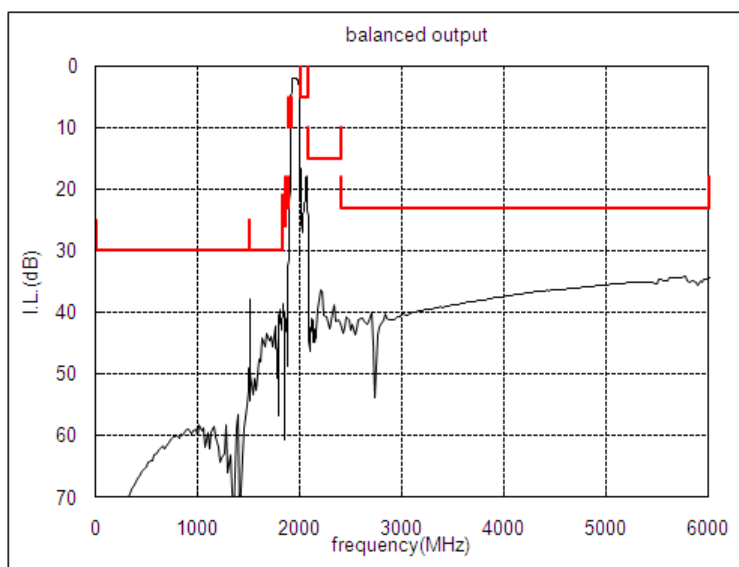
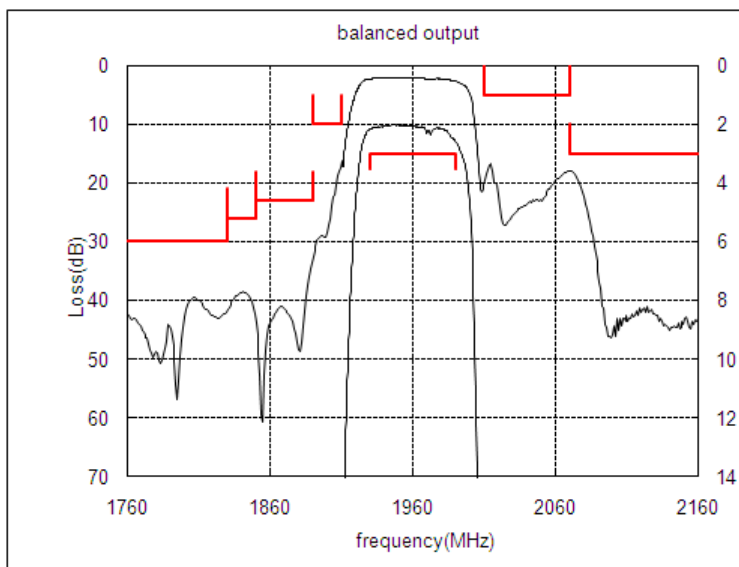


Item	Specification			
	-30 to 85°C	-20 to 85°C	25±2°C	typ.
Nominal Center Frequency(fc)	1960MHz			
Insertion Loss (1930 to 1990 MHz)	3.0 dB max.	3.0 dB max.	2.7 dB max.	2.4 dB
Absolute Attenuation				
1) 0.1 to 1510 MHz	30 dB min.	30 dB min.	30 dB min.	49 dB
2) 1510 to 1830 MHz	30 dB min.	30 dB min.	30 dB min.	37 dB
3) 1830 to 1850 MHz	26 dB min.	26 dB min.	26 dB min.	36 dB
4) 1850 to 1890 MHz	23 dB min.	23 dB min.	23 dB min.	33 dB
5) 1890 to 1910 MHz	10 dB min.	10 dB min.	11 dB min.	17 dB
6) 2010 to 2070 MHz	5 dB min.	6 dB min.	7 dB min.	10 dB
7) 2070 to 2400 MHz	15 dB min.	17 dB min.	17 dB min.	22 dB
8) 2400 to 6000 MHz	23 dB min.	23 dB min.	23 dB min.	35 dB
Ripple Deviation (1930 to 1990 MHz)	1.5 dB max.	1.4 dB max.	1.3 dB max.	0.9 dB
VSWR (1930 to 1990 MHz)	2.2 max.	2.1 max.	2.0 max.	1.6
Amplitude Balance (1930 to 1990 MHz)	±1.2dB max.	±1.2dB max.	±1.2dB max.	±0.7dB
Phase Balance (1930 to 1990 MHz)	180±10deg. max.	180±10deg. max.	180±10deg.	180±3deg.
Unbalance Port Matching Impedance (nominal)	50Ω			
Balance Port Matching Impedance (nominal)	150Ω//8.2nH			
Input Signal Level	20mW (+13dBm), 2000 hours			

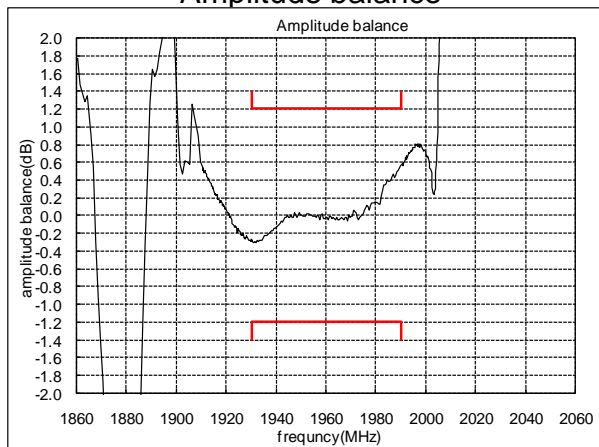
SAW FILTER FOR GSM1800/1900

Murata part number : SAWEN1G84BH0F00 (fc=1960MHz)

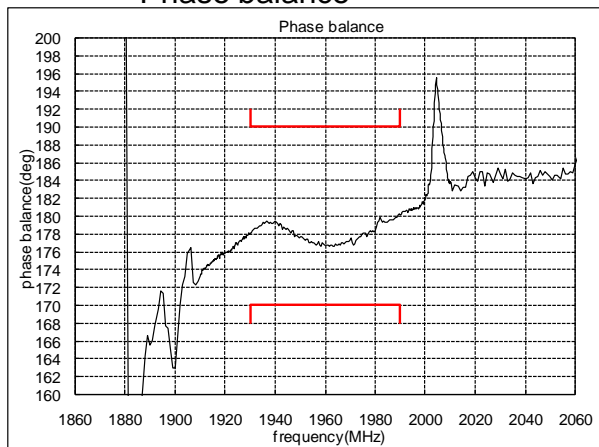
Frequency Performance



Amplitude balance



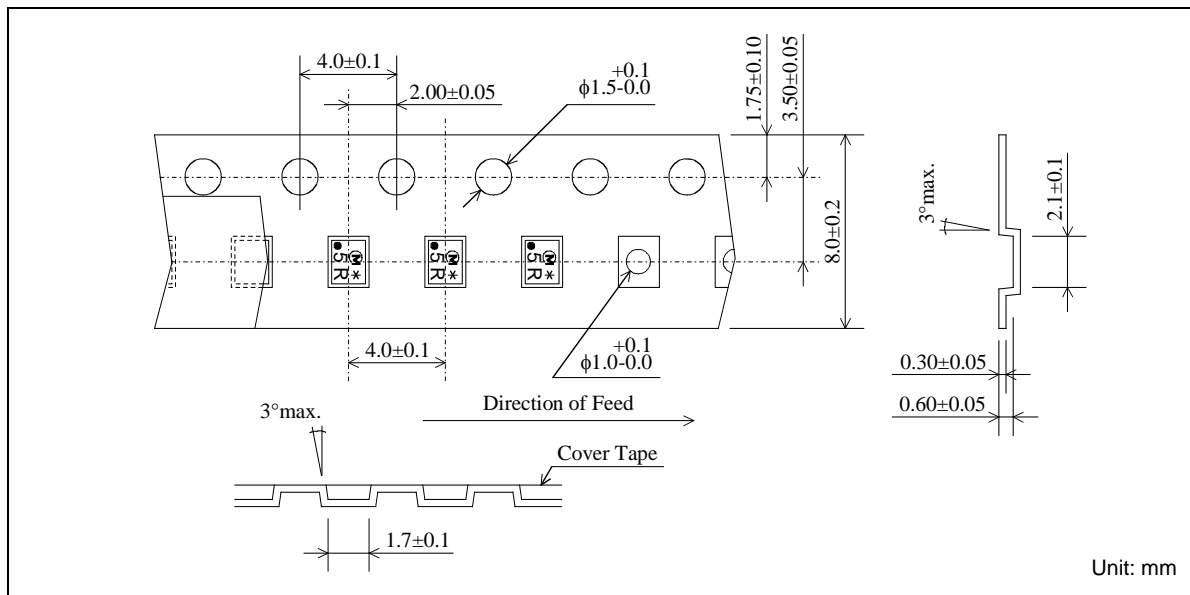
Phase balance



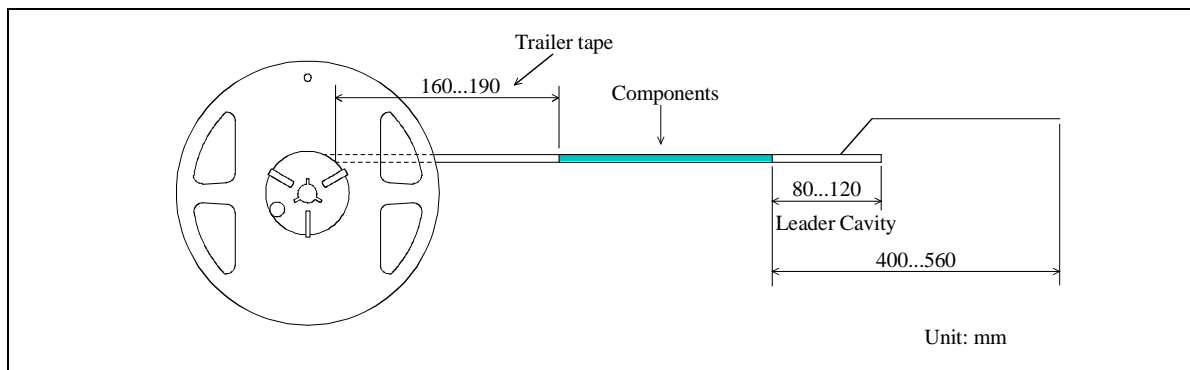
SAW FILTER FOR GSM1800/1900

Murata part number : SAWEN1G84BH0F00

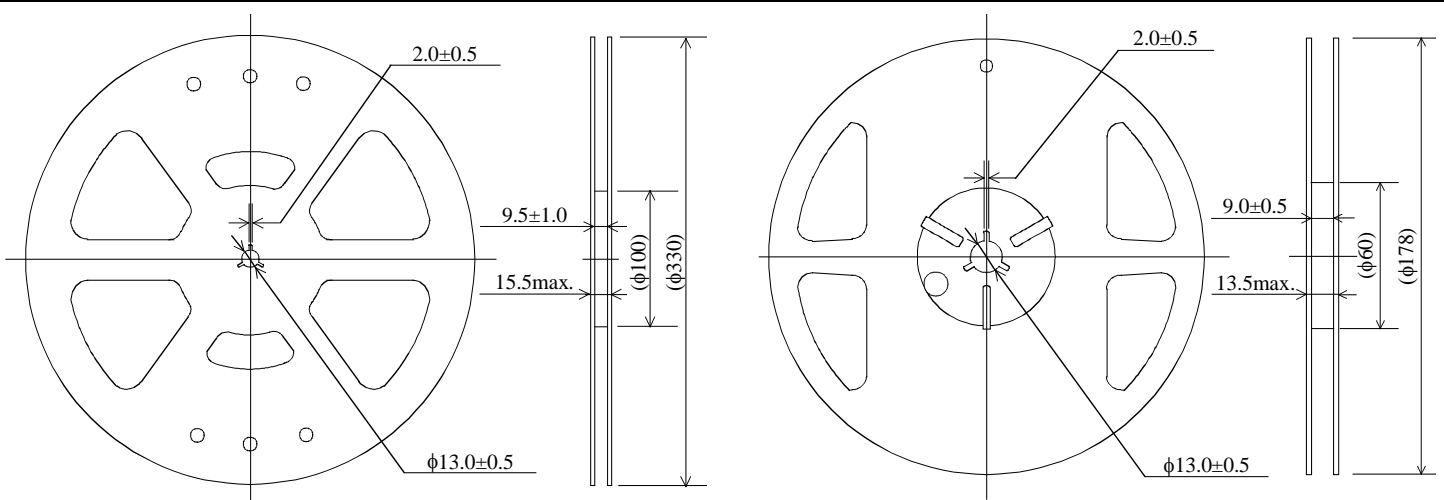
Dimensions of Carrier Tape



Dimensions of Tape



Dimensions of Reel



SAWEN1G84BH0F00R00 ... 10000pcs/reel

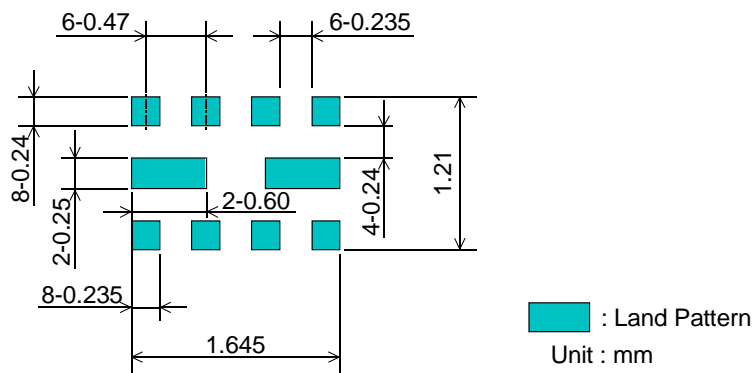
SAWEN1G84BH0F00R15 ... 5000pcs/reel

SAW FILTER FOR GSM1800/1900

Murata part number : SAWEN1G84BH0F00

Recommended Land Pattern

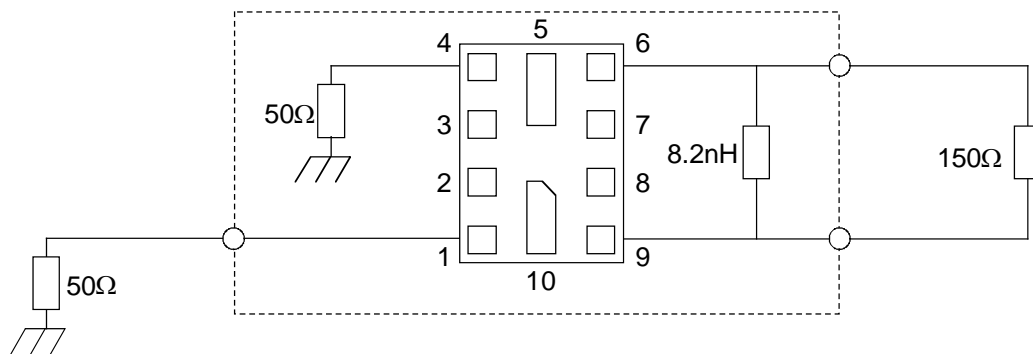
Top View



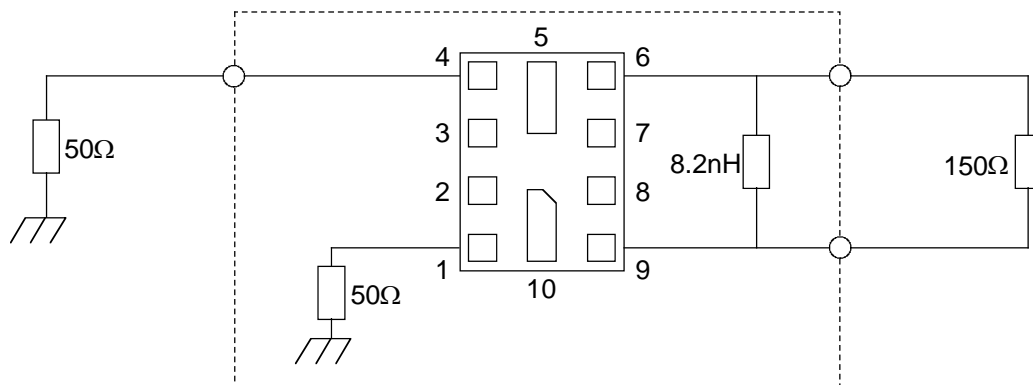
Test Circuit

Bottom View

1842.5MHz



1960MHz



SAW FILTER FOR GSM1800/1900

Murata part number : SAWEN1G84BH0F00

■ RoHS Compliance

This component is compliant with RoHS directive.

This component was always RoHS compliant from the first date of manufacture.

• Caution - Limitation of Applications

This product is intended for the following applications only; however, please do not use this product in these applications where defects might directly cause damage to a third party's life, body or property.

- a. Mobile Telephone
- b. Cordless phone (except for Automotive use)
- c. PC (Including Notebook PC, Netbook PC, Tablet)
- d. Game
- e. Camera (except for Business/security use)
- f. Set Top Box
- g. Electronic dictionary
- h. Digital audio equipment

• This catalog is for reference only and not an official product specification document, therefore, please review and approve our official product specification before ordering this product.