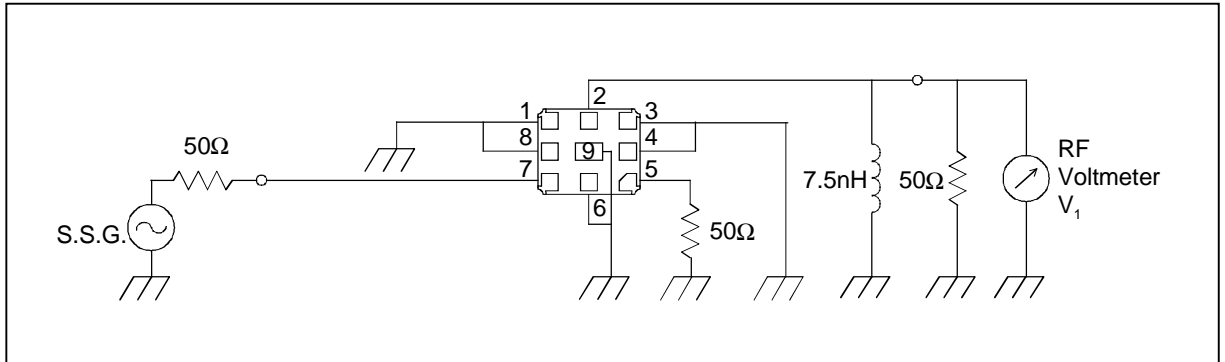


[Tx → ANT]

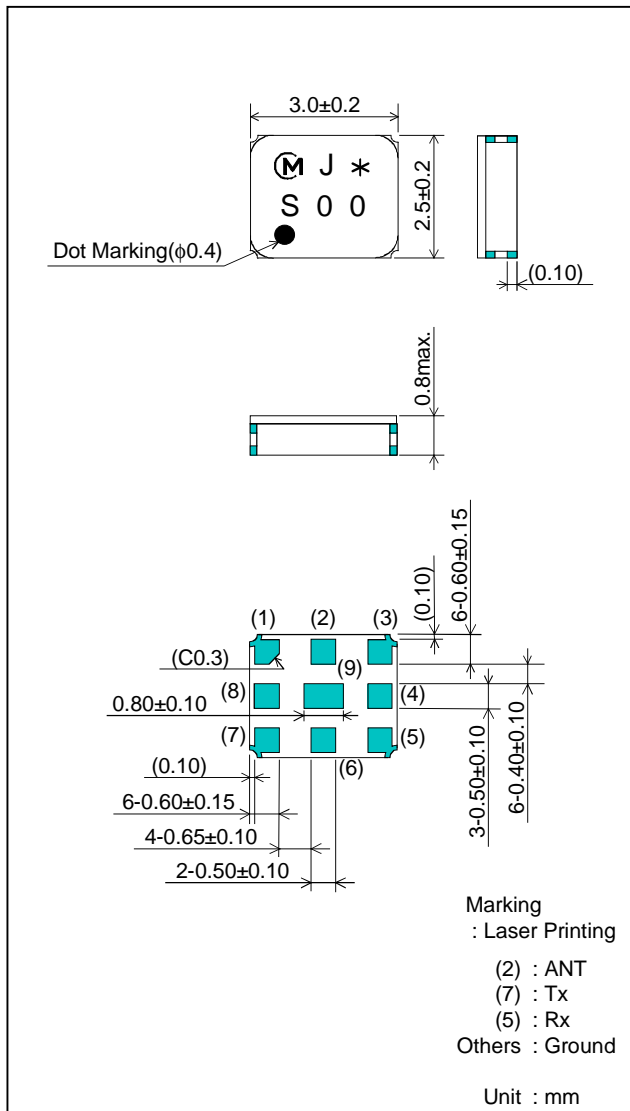
■ Feature

1. Low Insertion Loss (2.1 dB max.)
2. High Selectivity (at 869 to 894 MHz ; 43 dB min.)
3. Small SMD package (3.0x2.5mm package)

■ Test Circuit



■ Package Dimensions

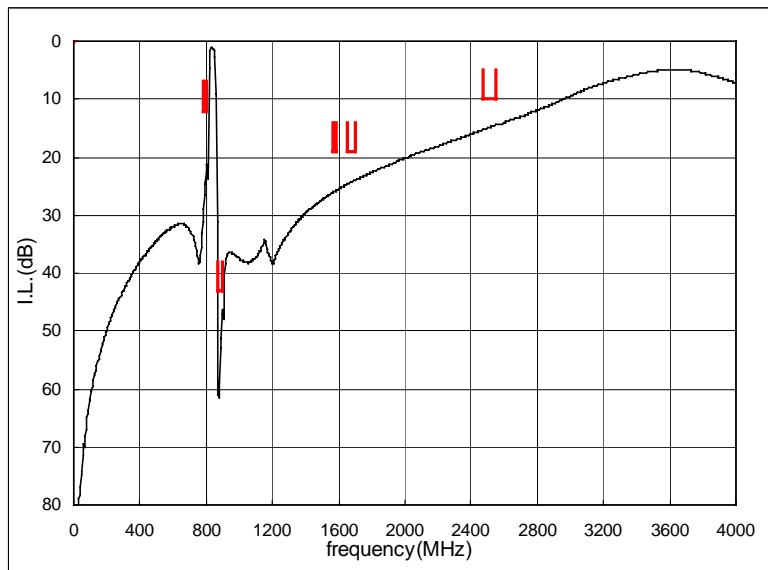
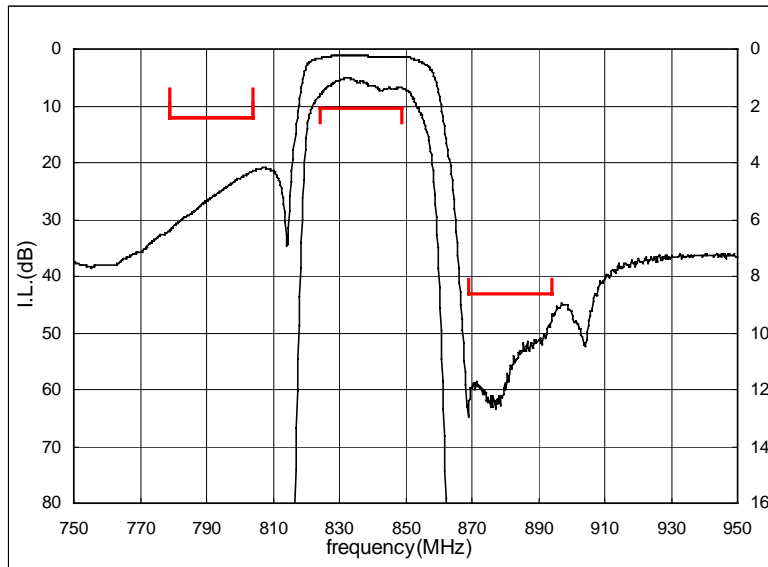


■ Specification

Item	Specification	
	-30 to +85°C	typ.
Nominal Center Frequency(fc)	836.5 MHz	
Insertion Loss (824 to 849 MHz)	2.1 dB max.	1.6 dB
Absolute Attenuation		
1) 779 to 804 MHz	12 dB min.	20 dB
2) 869 to 894 MHz	43 dB min.	47 dB
3) 1570 to 1580 MHz	19 dB min.	23 dB
4) 1648 to 1698 MHz	19 dB min.	24 dB
5) 2472 to 2547 MHz	10 dB min.	13 dB
Ripple Deviation (824 to 849 MHz)	1.3 dB max.	0.5 dB
VSWR (824 to 849 MHz)	2.1 max.	1.8
Input/Output Impedance (nominal)	50Ω	

[Tx→ANT]

■ Frequency Performance

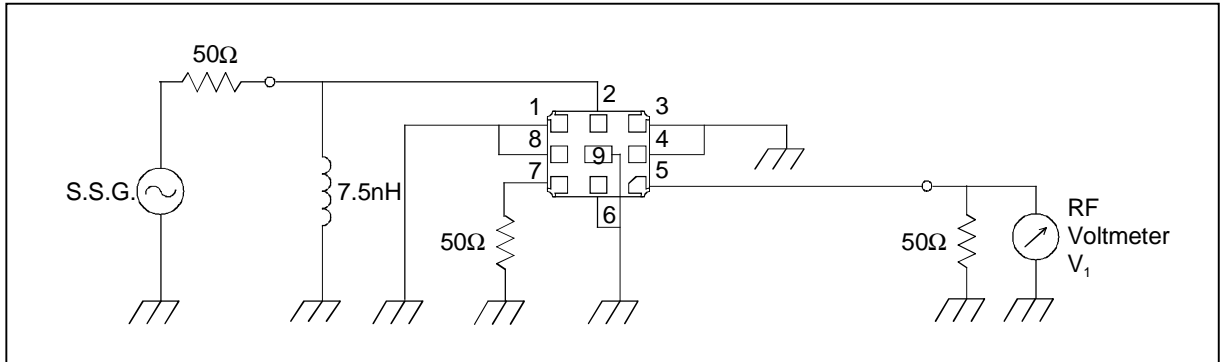


[ANT → Rx]

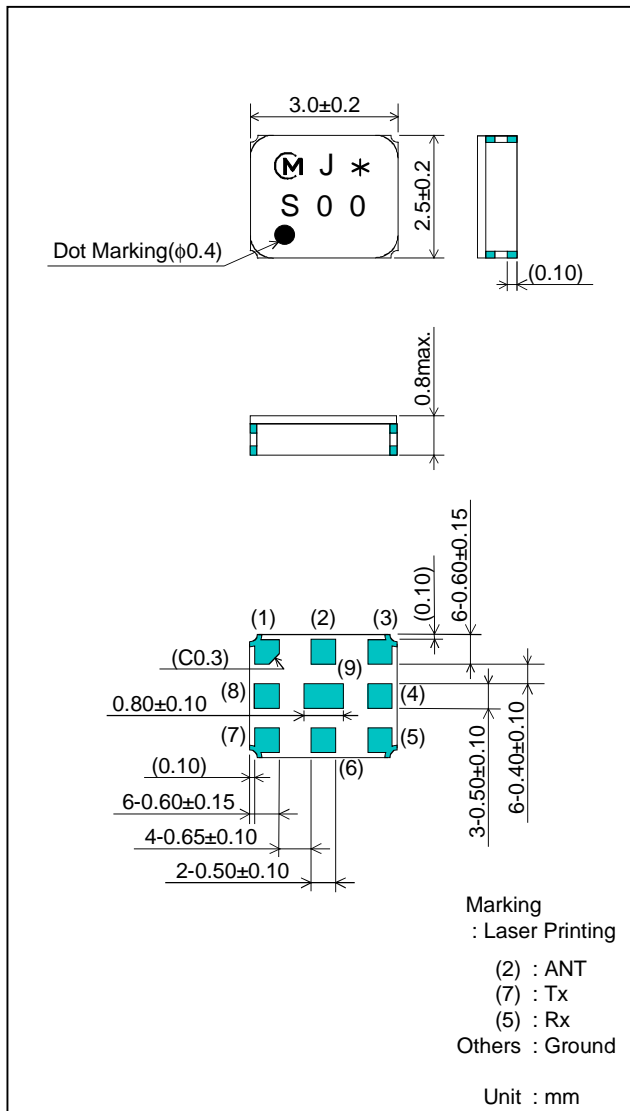
■ Feature

1. Low Insertion Loss (3.2 dB max.)
2. High Selectivity (at 824 to 849 MHz ; 50 dB min.)

■ Test Circuit



■ Package Dimensions

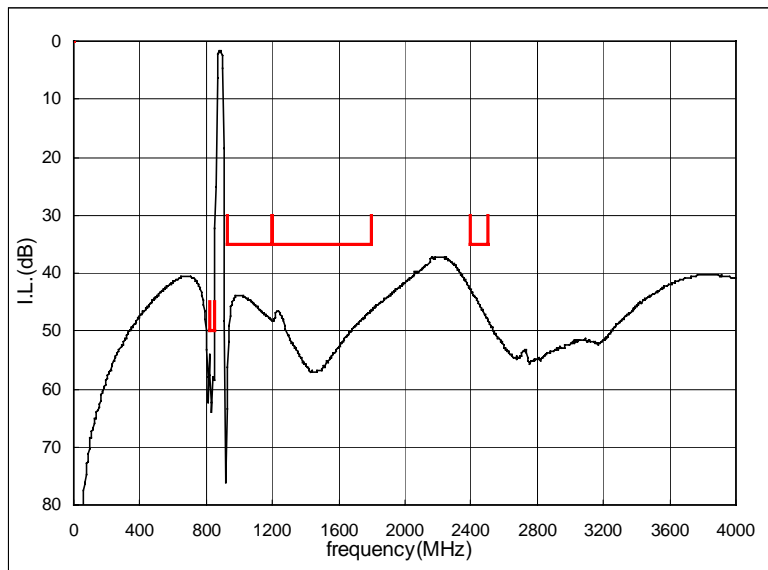
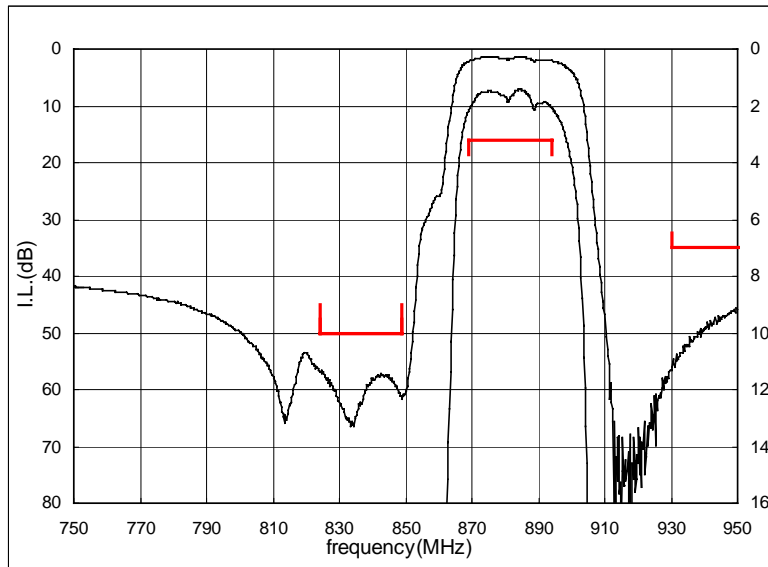


■ Specification

Item	Specification	
	-30 to +85°C	typ.
Nominal Center Frequency(f_c)	881.5 MHz	
Insertion Loss (869 to 894 MHz)	3.2 dB max.	2.3 dB
Absolute Attenuation		
1) 824 to 849 MHz	50 dB min.	53 dB
2) 930 to 1200 MHz	35 dB min.	42 dB
3) 1200 to 1800 MHz	35 dB min.	42 dB
4) 2400 to 2500 MHz	35 dB min.	50 dB
Ripple Deviation (869 to 894 MHz)	2.0 dB max.	0.8 dB
VSWR (869 to 894 MHz)	2.1 max.	1.7
Input/Output Impedance (nominal)	50Ω	

[ANT → Rx]

■ Frequency Performance

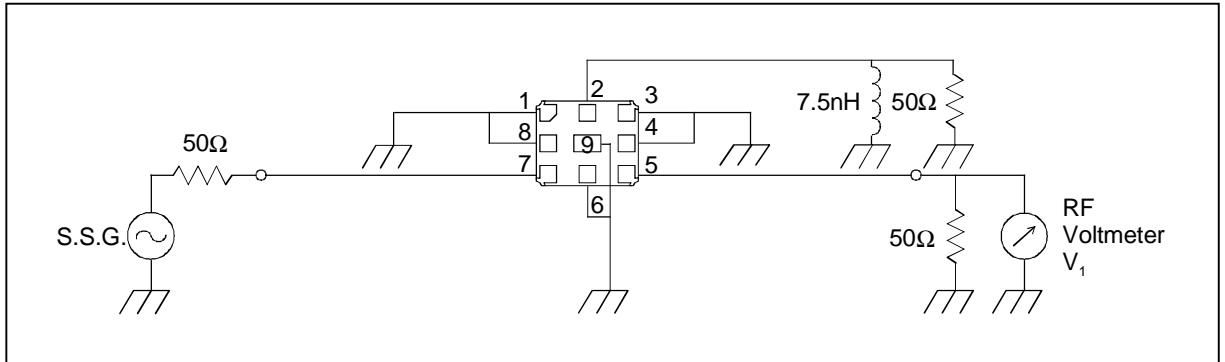


[Tx → Rx]

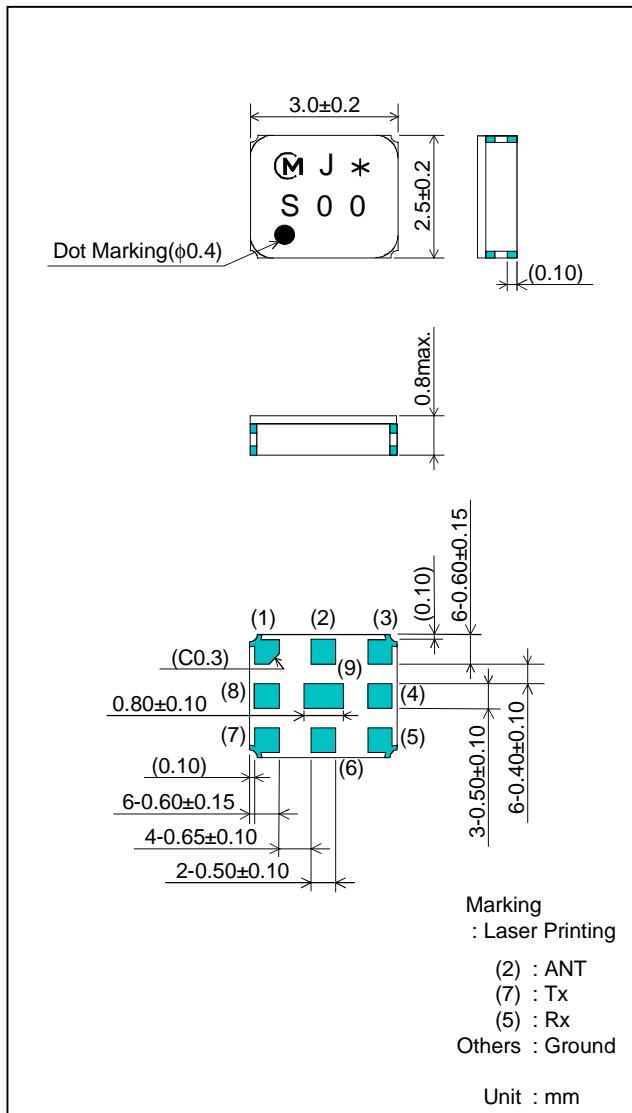
■ Feature

1. Isolation (Tx Band ; 54 dB, Rx Band ; 45 dB)

■ Test Circuit



■ Package Dimensions



■ Specification

Item	Specification	
	-30 to +85°C	typ.
Isolation		
1) 824 to 849 MHz	54 dB min.	57 dB
2) 869 to 894 MHz	45 dB min.	48 dB

[Tx → Rx]

■ Frequency Performance

