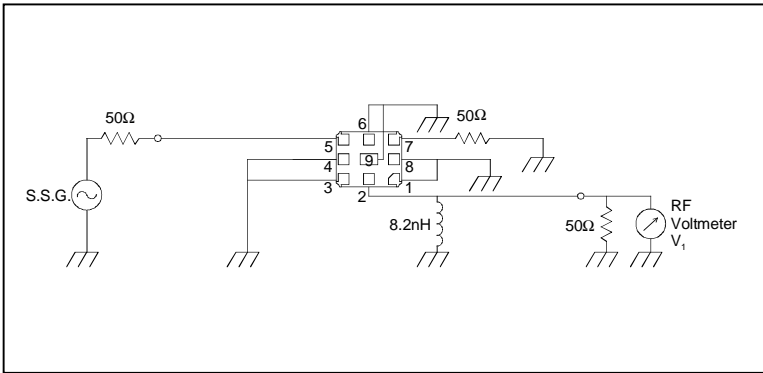


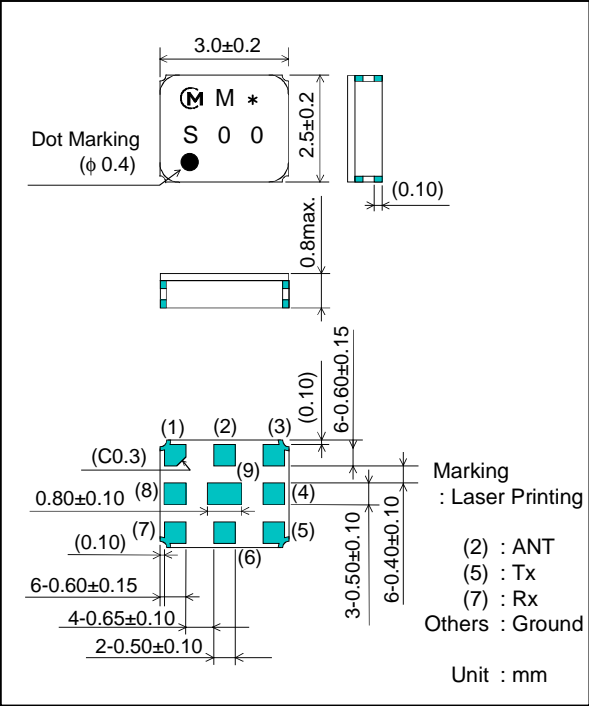
Feature

1. Low Insertion Loss (Tx ; 2.1 dB max., Rx ; 3.3 dB max.)
2. Small SMD package (3.0x2.5mm package)
3. High Isolation
(at Tx Band ; 57 dB min., Rx Band ; 45 dB min.)

Test Circuit



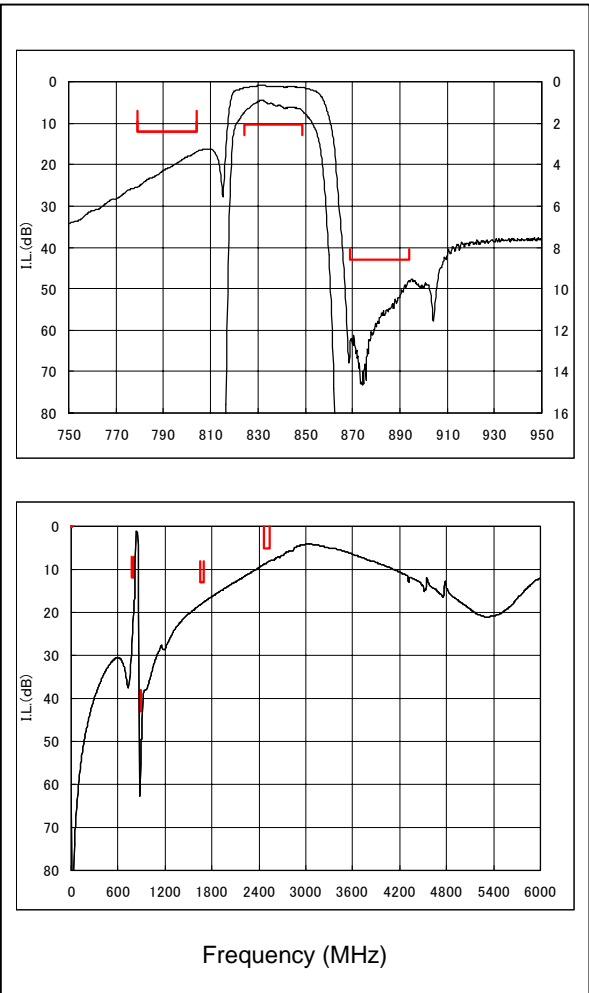
Package Dimensions



Specification

Item	Specification	
	-30 to +85°C	typ.
Nominal Center Frequency(f_c)	836.5 MHz	
Insertion Loss (824 to 849 MHz)	2.1 dB max.	1.5 dB
Absolute Attenuation		
1) 779 to 804 MHz	12 dB min.	17 dB
2) 869 to 894 MHz	43 dB min.	47 dB
3) 1648 to 1698 MHz	13 dB min.	16 dB
4) 2472 to 2547 MHz	5 dB min.	7 dB
Ripple Deviation (824 to 849 MHz)	1.3 dB max.	0.6 dB
VSWR (824 to 849 MHz)	2.0 max.	1.6
Input/Output Impedance (nominal)	50Ω	

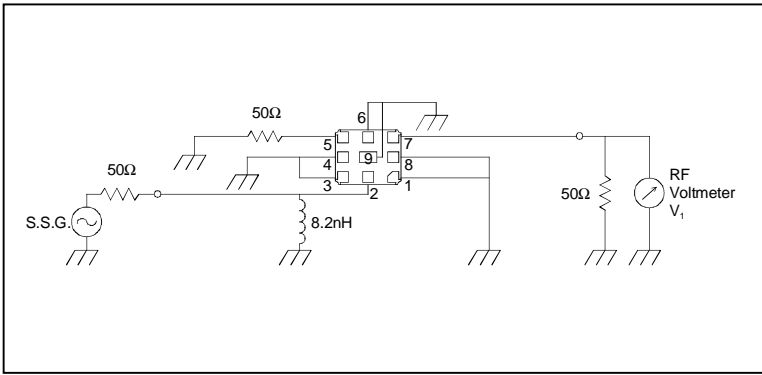
Frequency Characteristics



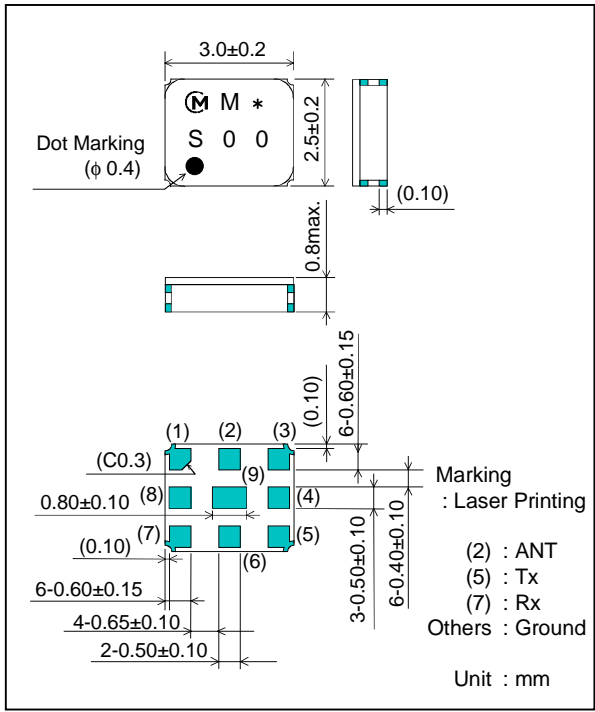
Feature

1. Low Insertion Loss (Tx ; 2.1 dB max., Rx ; 3.3 dB max.)
2. Small SMD package (3.0x2.5mm package)
3. High Isolation (at Tx Band ; 57 dB min., Rx Band ; 45 dB min.)

Test Circuit



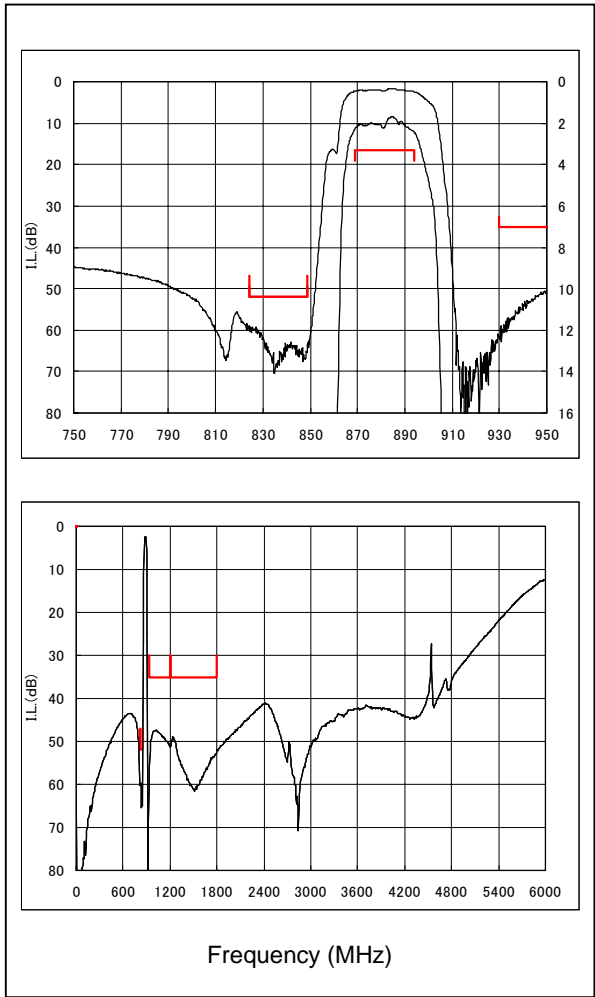
Package Dimensions



Specification

Item	Specification	
	-30 to +85°C	typ.
Nominal Center Frequency(f_c)	881.5 MHz	
Insertion Loss (869 to 894 MHz)	3.3 dB max.	2.4 dB
Absolute Attenuation		
1) 824 to 849 MHz	52 dB min.	58 dB
2) 930 to 1200 MHz	35 dB min.	47 dB
3) 1200 to 1800 MHz	35 dB min.	48 dB
Ripple Deviation (869 to 894 MHz)	2.0 dB max.	0.9 dB
VSWR (869 to 894 MHz)	2.1 max.	1.9
Input/Output Impedance (nominal)	50Ω	

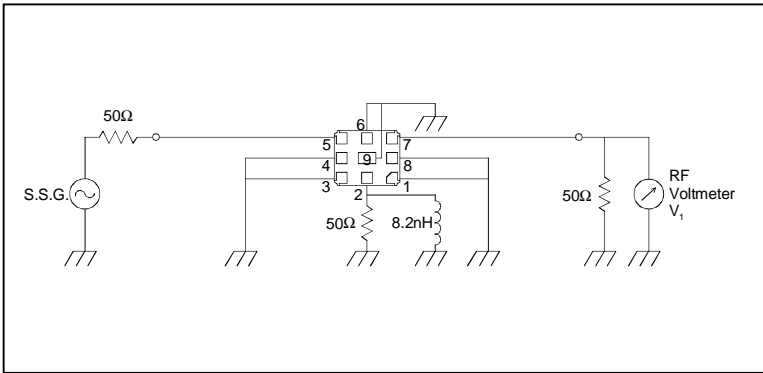
Frequency Characteristics



Feature

1. Low Insertion Loss (Tx ; 2.1 dB max., Rx ; 3.3 dB max.)
2. Small SMD package (3.0x2.5mm package)
3. High Isolation
(at Tx Band ; 57 dB min., Rx Band ; 45 dB min.)

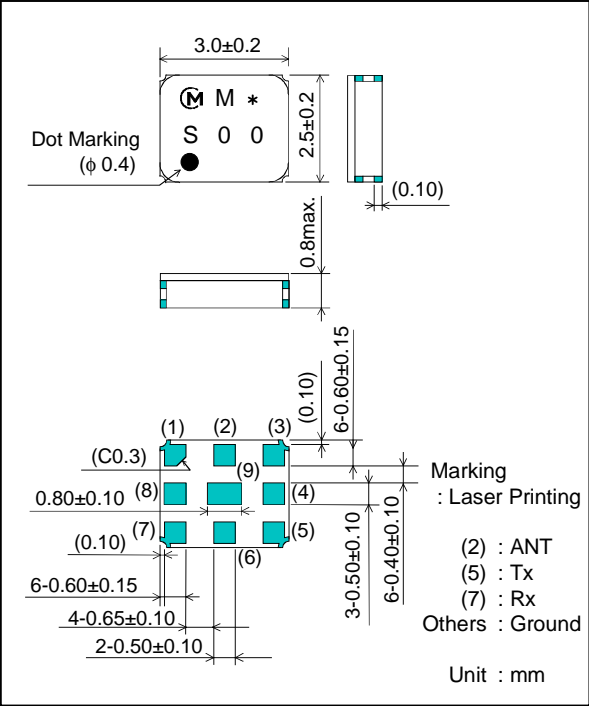
Test Circuit



Specification

Item	Specification	
	-30 to +85°C	typ.
Absolute Attenuation		
1) 824 to 849 MHz	57 dB min.	60 dB
2) 869 to 894 MHz	45 dB min.	48 dB

Package Dimensions



Frequency Characteristics

