

4

3

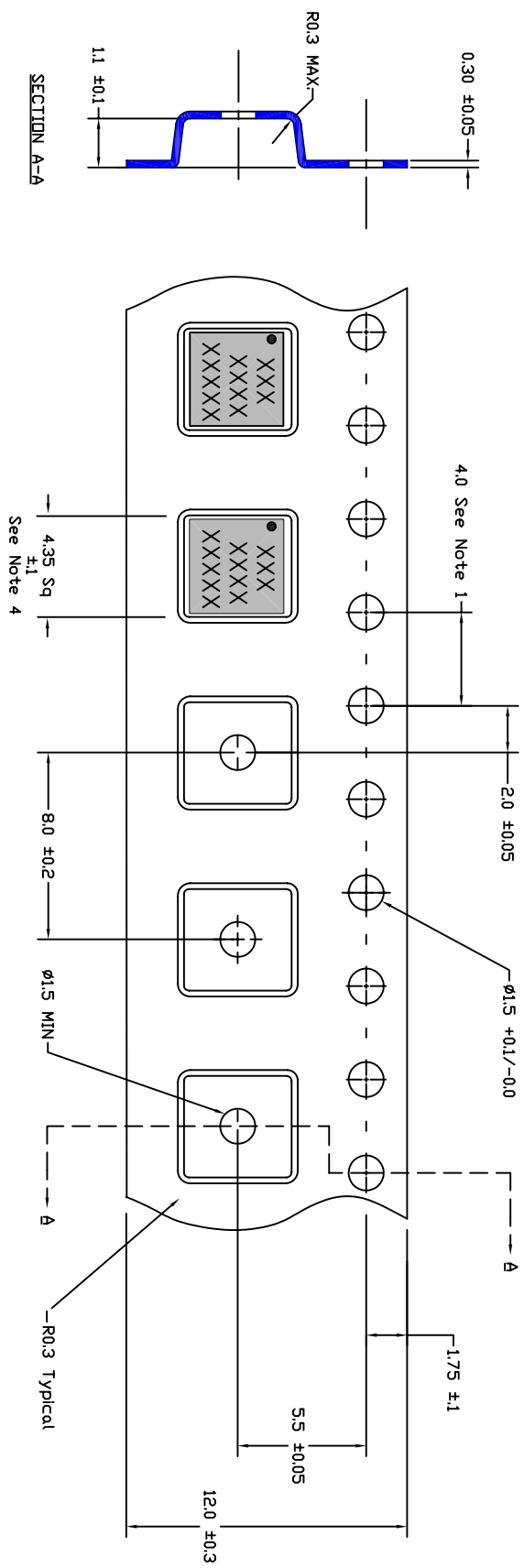
2

1

PROPRIETARY DATA
 This document may not be reproduced, disclosed, or otherwise used, in whole or in part, without the written permission of SIRENZA MICRODEVICES

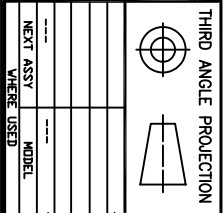


REVISION HISTORY				
REV	DESCRIPTION	ECD	APPR	DATE
A	INITIAL RELEASE	3915	Bar-Come	6/03/04



GENERAL NOTES

1. 10 sprocket hole pitch cumulative tolerance
2. Camber not to exceed 1mm in 100mm
3. Material: Black Conductive Polystyrene
4. Measured on a plane 0.3mm above the bottom of the pocket.
5. Measured from a plane on the inside bottom of the carrier to the top surface of the carrier.



UNLESS OTHERWISE SPECIFIED, DIMENSIONS ARE IN MM [INCHES]	
PER ASSEMBLY PRACTICES AND DECIMAL ANGLE	XX ±0.25(0.01) ±1/2
MATERIAL(S)	See Notes
FINISH	---
NEXT ASSY WHERE USED	MODEL
---	---

SCALE: Drawing Not to Scale

SIGNATURE: _____ **DATE:** _____

DWG TITLE: Tape & Reel Packaging
4X4 mm QFN/MLF

SIZE: B **DWG NO:** MPD-103716 **REV:** A

SHEET 1 OF 1

4

3

2

1