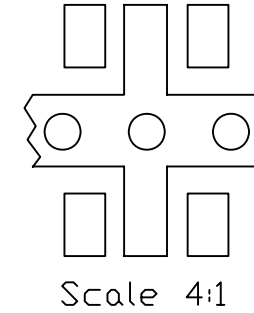
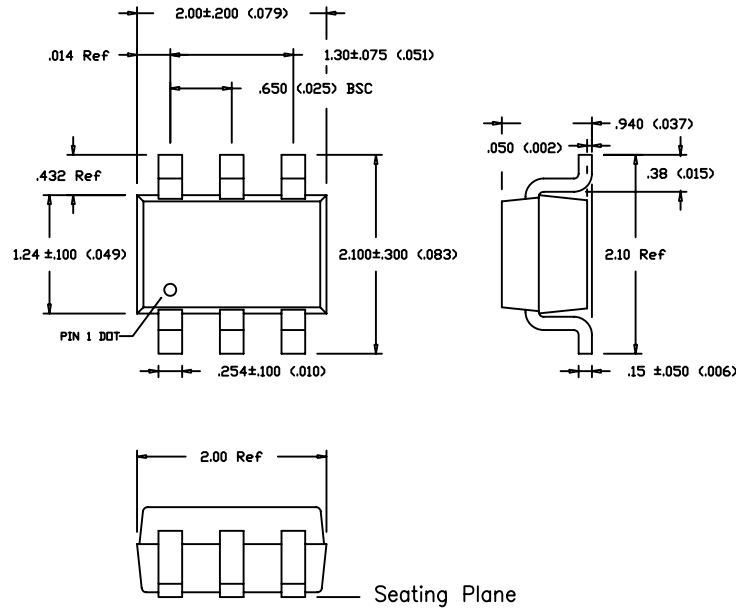
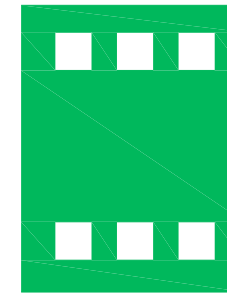


Caution: The Land Patterns and Solder Mask shown are generic for this package.
Refer to product data sheet for any required variations specific to an application.



- Generic Land Pattern -



Scale 1:2 (mm)

- Generic Solder Mask Opening -

Notes:

1. Lead Base Metal - Copper \square in 194
2. Lead Finish
Std PN - Sn/Pb Sn => 80%
Z Option - 100% Matte Sn - .010 (.0004) min

UNLESS OTHERWISE SPECIFIED,
DIMENSIONS ARE IN mm (Inches)
PER ANSI Y14.5M-1982.
TOLERANCES ARE:
DECIMAL ANGLE
.XX ±.12 (.005) ±1/2°
.XXX ±.05 (.002)

MATERIAL(S):

See Notes

FINISH:

See Notes

- Do Not Scale Hard Copy -



Package Type:

SOT-363 (SC70-6) Pins 2 & 5 Fused

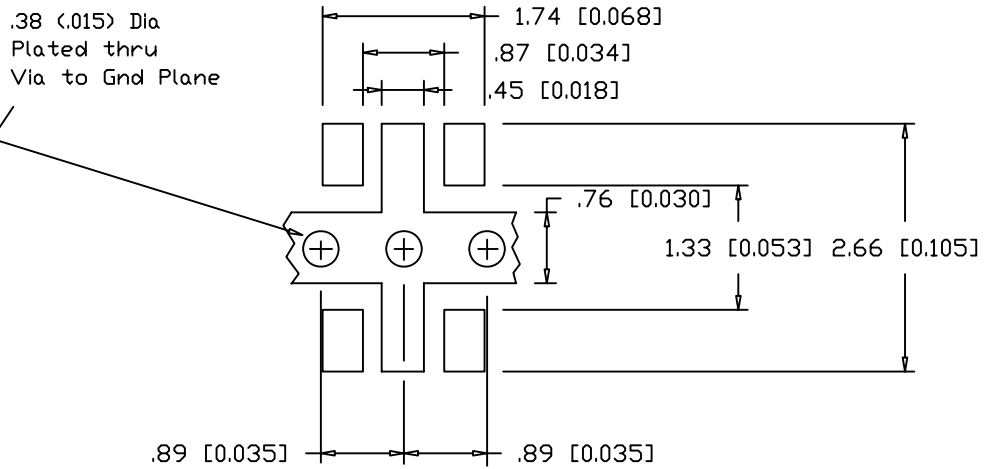
SMDI Package Type: XXX-XX63

Dwg No.

MPO-100141

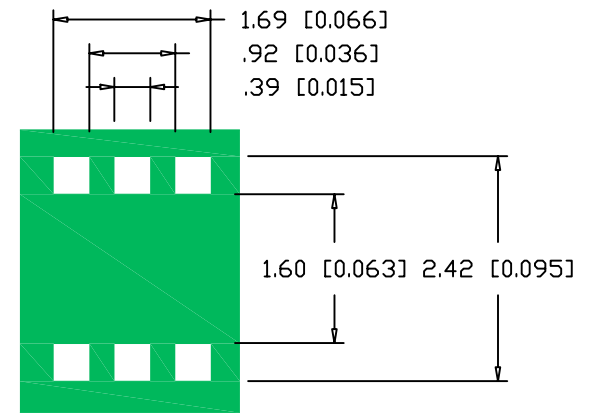
Sht
1 of 2

REV
C



Scale 1:2 (mm)

- Generic Land Pattern -



Scale 1:2 (mm)

- Generic Solder Mask Opening -

- Do Not Scale Hard Copy -



Package Type:
SOT-363 (SC70-6) Pins 2 & 5 Fused
SMDI Package Type: XXX-XX63

Dwg No.	MPO-100141	Sht 2 of 2	REV C
---------	------------	---------------	----------