

4

3

2

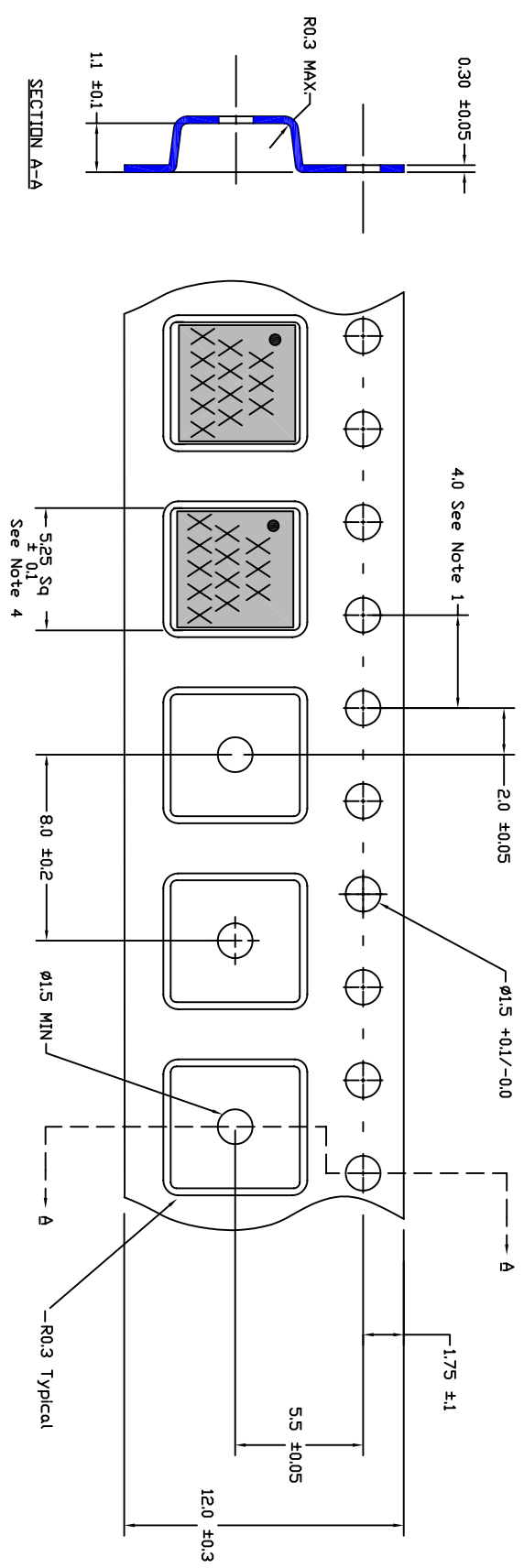
1

PROPRIETARY DATA

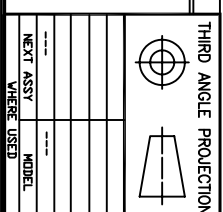
This document may not be reproduced, disclosed, or otherwise used, in whole or in part, without the written permission of SIRENZA MICRODEVICES



REVISION HISTORY				
REV	DESCRIPTION	ECD	APPR	DATE
A	INITIAL RELEASE	3915	Bar-Come	6/3/04



- GENERAL NOTES**
1. 10 sprocket hole pitch cumulative tolerance
  2. Camber not to exceed 1mm in 100mm
  3. Material: Black Conductive Polystyrene
  4. Measured on a plane 0.3mm above the bottom of the pocket.
  5. Measured from a plane on the inside bottom of the carrier.



UNLESS OTHERWISE SPECIFIED, DIMENSIONS ARE IN MM (INCHES) PER ANSI Y14.5M-1992

DECIMAL ANGLES: XX.XX ±0.25(0.1) ±1/2°

ANGLES: XXX.X ±0.1(0.05)

FINISH: See Notes

SCALE: Drawing Not to Scale

SIGNATURE: \_\_\_\_\_ DATE: \_\_\_\_\_

Dwg Template: DDC-106671 (A)

**SIRENZA MICRODEVICES**

DWG TITLE: Component Tape & Reel Packaging

SIZE: 5X5 mm QFN/MLF

MPD-103717

REV: A

SHEET 1 OF 1

4

3

2

1