

6

5

4

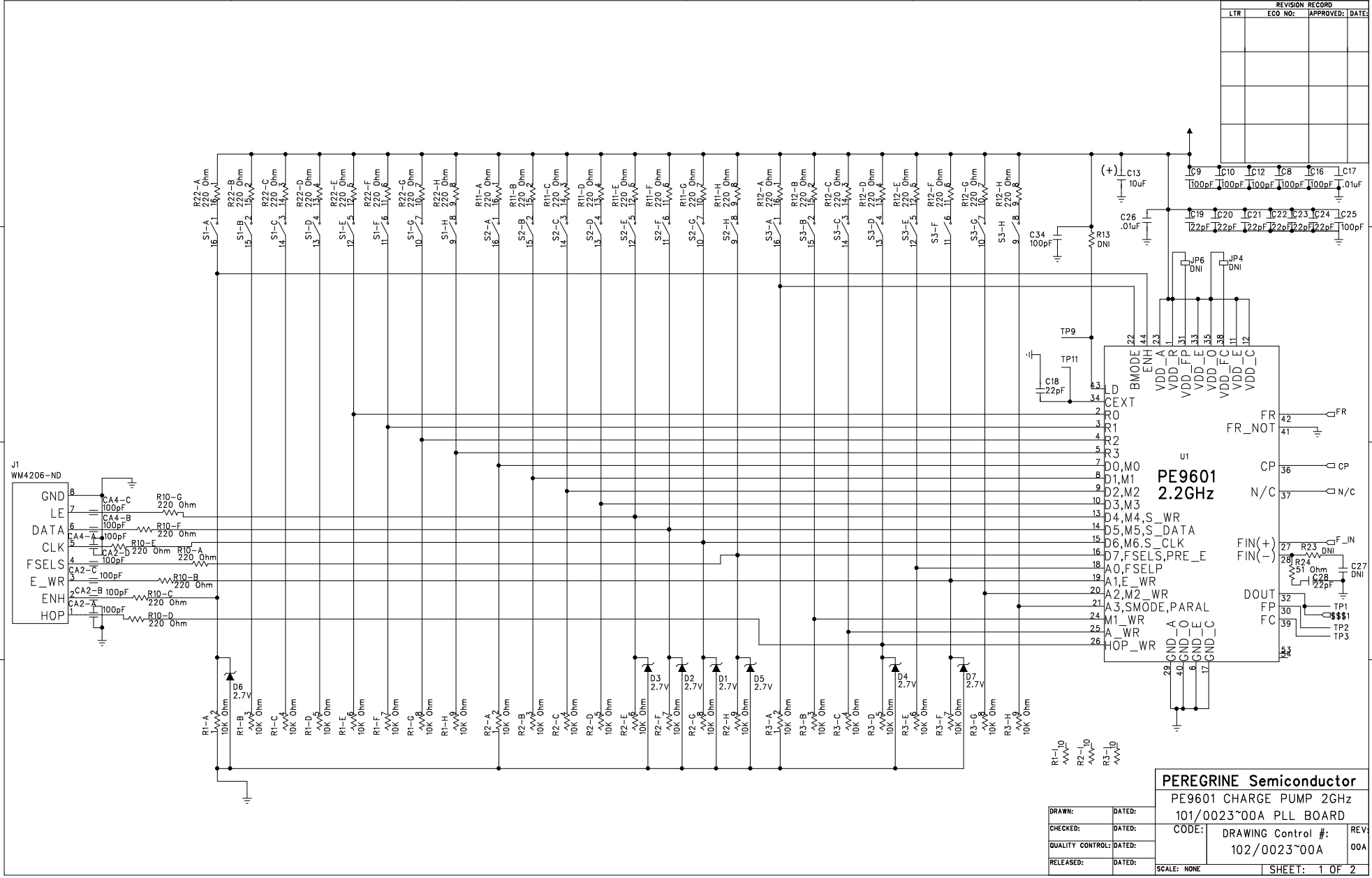
3

2

1

REVISION RECORD

| LTR | ECO NO. | APPROVED: | DATE: |
|-----|---------|-----------|-------|
| | | | |
| | | | |
| | | | |
| | | | |



PEREGRINE Semiconductor
 PE9601 CHARGE PUMP 2GHz
 101/0023~00A PLL BOARD

| | | | | |
|------------------|--------|--------------|--------------------|------|
| DRAWN: | DATED: | CODE: | DRAWING Control #: | REV: |
| CHECKED: | DATED: | 102/0023~00A | 00A | |
| QUALITY CONTROL: | DATED: | | | |
| RELEASED: | DATED: | | | |

SCALE: NONE SHEET: 1 OF 2

R1-10
 R2-10
 R3-10

6

5

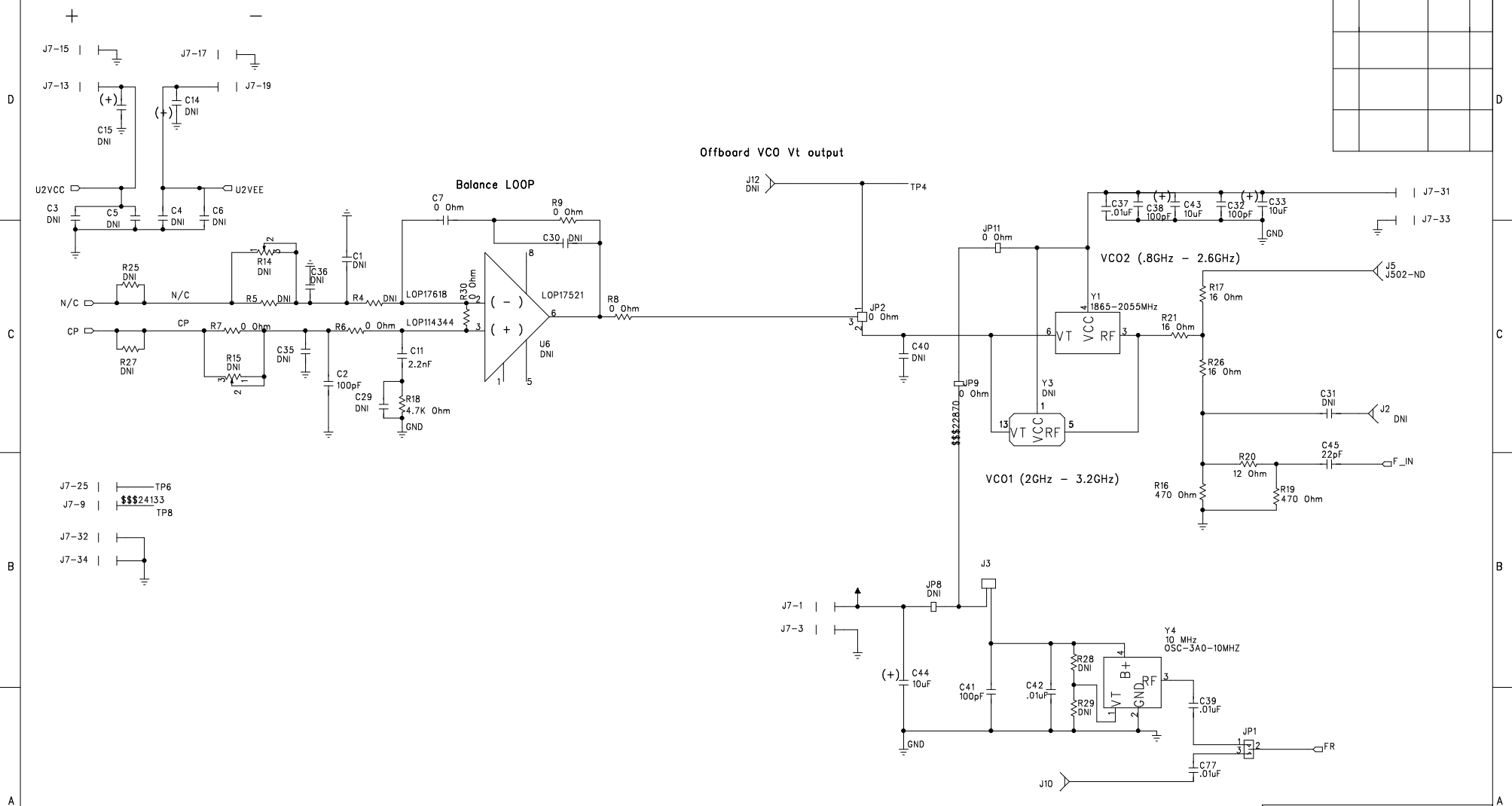
4

3

2

1

| REVISION RECORD | | | |
|-----------------|---------|-----------|-------|
| LTR | ECO NO. | APPROVED: | DATE: |
| | | | |
| | | | |
| | | | |



PEREGRINE Semiconductor
 PE9601 CHARGE PUMP 2GHz
 101/0023~00A PLL BOARD

| | | | | |
|------------------|--------|--------------|--------------------|------|
| DRAWN: | DATED: | CODE: | DRAWING Control #: | REV: |
| CHECKED: | DATED: | 102/0023~00A | 00A | |
| QUALITY CONTROL: | DATED: | SCALE: NONE | SHEET: 2 OF 2 | |
| RELEASED: | DATED: | | | |

PE9601 Evaluation Board Bill of Materials

| Item | Qty | Reference | Value | Part Description | Notes |
|------|-----|-------------------------|---------|------------------------------|-----------------|
| 1 | 1 | 101/0002~01A | | PE9600 Series PLL Board | |
| 2 | 1 | C1 | DNI | Chip Cap 1206 | DO NOT INSTALL |
| 3 | 1 | C11 | 2.2nF | PPS High grade Chip Cap 1206 | Loop filter |
| 4 | 4 | C13 C33 C43-44 | 10uF | Cap 2513 | |
| 5 | 2 | C14-15 | DNI | Cap 2513 | DO NOT INSTALL |
| 6 | 6 | C17 C26 C37 C39 C42 C77 | .01uF | AVX Chip Cap 0805 | |
| 7 | 2 | C18-24 C28 | 22pF | AVX Chip Cap 0402 | |
| 8 | 1 | C2 | 100pF | PPS High grade Chip Cap 1206 | Loop filter |
| 9 | 2 | C27 C31 | DNI | AVX Chip Cap 0402 | DO NOT INSTALL |
| 10 | 4 | C29-30 C35-36 | DNI | AVX Chip Cap 0603 | DO NOT INSTALL |
| 11 | 1 | C3 | DNI | Cap 0805 | DO NOT INSTALL |
| 12 | 3 | C32 C38 C41 | 100pF | AVX Chip Cap 0603 | |
| 13 | 1 | C4 | DNI | AVX Chip Cap 0805 | DO NOT INSTALL |
| 14 | 1 | C40 | DNI | Cap 1206 | DO NOT INSTALL |
| 15 | 1 | C45 | 22pF | AVX Chip Cap 0603 | |
| 16 | 1 | C5 | DNI | Cap 0603 | DO NOT INSTALL |
| 17 | 1 | C6 | DNI | AVX Chip Cap 0603 | DO NOT INSTALL |
| 18 | 1 | C7 | 0 Ohm | AVX Chip Cap 1206 | Using as jumper |
| 19 | 7 | C8-10 C12 C16 C25 C34 | 100pF | AVX Chip Cap 0603 | |
| 20 | 2 | CA2 CA4 | 100pF | SMC 3-Terminal Cap Array | |
| 21 | 7 | D1-7 | 2.7V | Zener Diode | |
| 22 | 1 | J1 | | 8 Pin Header | Serial Control |
| 23 | 1 | J12 | DNI | SMA Connector (Up Mount) | DO NOT INSTALL |
| 24 | 1 | J2 | DNI | SMA Connector | DO NOT INSTALL |
| 25 | 1 | J3 | | 2 Pin Header | TCXO VCC supply |
| 26 | 2 | J5 J10 | J502-ND | SMA Connector (Side Mount) | |
| 27 | 1 | J7, Pins 1& 3 | | 2 Pin Header | PLL VDD supply |
| 28 | 1 | J7, Pins 31& 33 | | 2 Pin Header | VCO VCC supply |
| 29 | 1 | JP1 | | 3 Pin Header | REF select |
| 30 | 1 | JP2 | 0 Ohm | 0603 Jumper | |
| 31 | 3 | JP4 JP6 JP8 | DNI | Jumper | DO NOT INSTALL |
| 32 | 2 | JP9 JP11 | 0 Ohm | 0402 Jumper | |
| 33 | 4 | R10-12 R22 | 220 Ohm | 16 Pin SMD R-Pack | |
| 34 | 3 | R1-3 | 10K Ohm | 10-Pin SIP Resistor | |

PE9601 Evaluation Board Bill of Materials

| | | | | | |
|----|---|-------------|--------------|---|----------------|
| 35 | 3 | R13 R28-29 | DNI | SMD Size 0603 Resistor | DO NOT INSTALL |
| 36 | 2 | R14-15 | DNI | Resistor Potentiometer | DO NOT INSTALL |
| 37 | 2 | R16 R19 | 470 Ohm | SMD Size 0603 Resistor | 2dB Pad |
| 38 | 3 | R17 R21 R26 | 16 Ohm | SMD Size Resistor 0805 | Splitter |
| 39 | 1 | R18 | 4.7K Ohm | SMD Resistor 0805 | Loop Filter |
| 40 | 1 | R20 | 12 Ohm | SMD Size 0603 Resistor | 2dB Pad |
| 41 | 3 | R23 R25 R27 | DNI | | DO NOT INSTALL |
| 42 | 1 | R24 | 51 Ohm | AVX Chip Resistor 0402 | |
| 43 | 1 | R30 | 0 Ohm | SMD Size 0603 Resistor | |
| 44 | 1 | R4 | DNI | AVX Chip Resistor 0603 | DO NOT INSTALL |
| 45 | 1 | R5 | DNI | SMD Resistor 0805 | DO NOT INSTALL |
| 46 | 1 | R6 | 0 Ohm | AVX Chip Resistor 0603 | |
| 47 | 3 | R7-9 | 0 Ohm | SMD Resistor 0805 | |
| 48 | 3 | S1-3 | | 16 Pin Dip Resistor/8 isolated Resistor | |
| 49 | 1 | U1 | 2.2GHz | Peregrine PE9601 PLL in PLCC socket | |
| 50 | 1 | U6 | DNI | Ultra Low Noise OP Amp | DO NOT INSTALL |
| 51 | 1 | Y1 | 1865-2055MHz | MW520 VCO | |
| 52 | 1 | Y3 | DNI | M3500-2032 VCO | DO NOT INSTALL |
| 53 | 1 | Y4 | 10 MHz | Vectron TCXO OSC-3A0-10MHz | |