

DC-DC Converter Short Form

MYGTC012R5BZN (Small Size & High Efficiency)

FEATURES

- High efficiency & Small Size SIL
- Wide input range (16V to 40V)
- 2 output(5V , 12V)
- Plastic case type
- ON/OFF control function(Control independent by 2 outputs)
- Short circuit protection



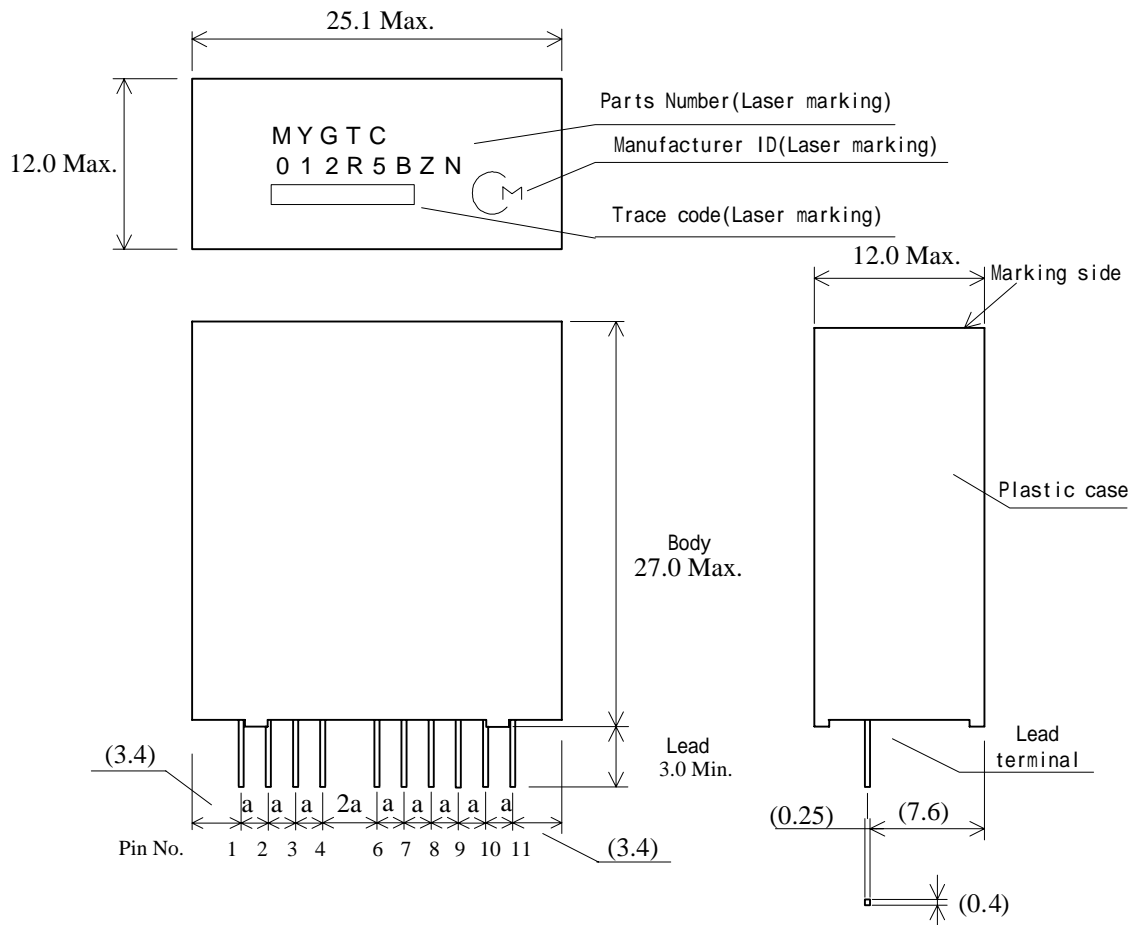
GENERAL SPECIFICATIONS (Ta=25°C)

Item	Symbol	Condition	MIN.	TYP.	MAX.	UNIT	
Input Voltage	Vin		16.0	24.0	40.0	V	
Output Voltage	Vout1	Vin=16.0~40.0V, Iout1=0~0.5A, Iout2=0~0.5A	4.85	5.00	5.15	V	
	Vout2		11.64	12.00	12.36		
Output Current	Iout1	Vin=16.0~40.0V	0	-	0.5	A	
	Iout2		0	-	0.5		
Ripple Voltage	Vrpl1	Vin=24V, Iout1=0~0.5A, Iout2=0~0.5A, BW=20MHz	-	50	-	mVpp	
	Vrpl2		-	100	-		
Efficiency	EFF	Vin=24V, Iout1=0.5A, Iout2=0.5A	-	89	-	%	
Remote Voltage	On/Off1	Vin=16.0~40.0V	OFF	2.5	-	-	V
			ON	-	-	0.5	
	On/Off2	Vin=16.0~40.0V,	OFF	2.5	-	-	
			ON	-	-	0.5	
Short Circuit Protection	SCP	If output is shorted to GND, DC-DC Converter shall be operated in a hiccup mode. After the short circuit event has cleared, the output is automatically brought back into regulation.					

⚠ Note:

1. This datasheet is downloaded from the website of Murata Manufacturing co., ltd. Therefore, it's specifications are subject to change or our products in it may be discontinued without advance notice. Please check with our sales representatives or product engineers before ordering.
2. This datasheet has only typical specifications because there is no space for detailed specifications. Therefore, please approve our product specifications or transact the approval sheet for product specifications before ordering.

DIMENSIONS



【Unit : mm】

()...reference value

Lead Pitch : $a=1.8 \pm 0.3\text{mm}$

Distance between the both roots of Pin.

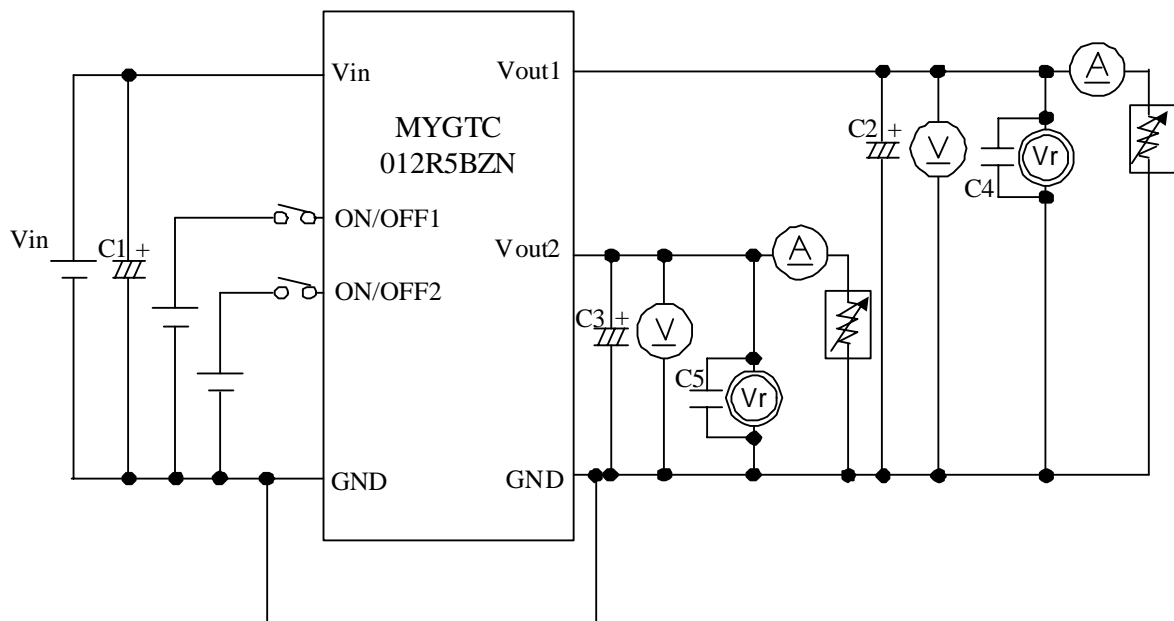
Tolerance is not accumulated.

Pin No.	Symbol	Function
1,2	Vin	Input
3,4	GND	GND
5	No Pin	No Pin
6,7	Vout1	Output (5V)
8,9	Vout2	Output (12V)
10	ON/OFF1	Remote ON/OFF of Vout1
11	ON/OFF2	Remote ON/OFF of Vout2

⚠ Note:

1. This datasheet is downloaded from the website of Murata Manufacturing co., ltd. Therefore, it's specifications are subject to change or our products in it may be discontinued without advance notice. Please check with our sales representatives or product engineers before ordering.
2. This datasheet has only typical specifications because there is no space for detailed specifications. Therefore, please approve our product specifications or transact the approval sheet for product specifications before ordering.

TEST CIRCUIT

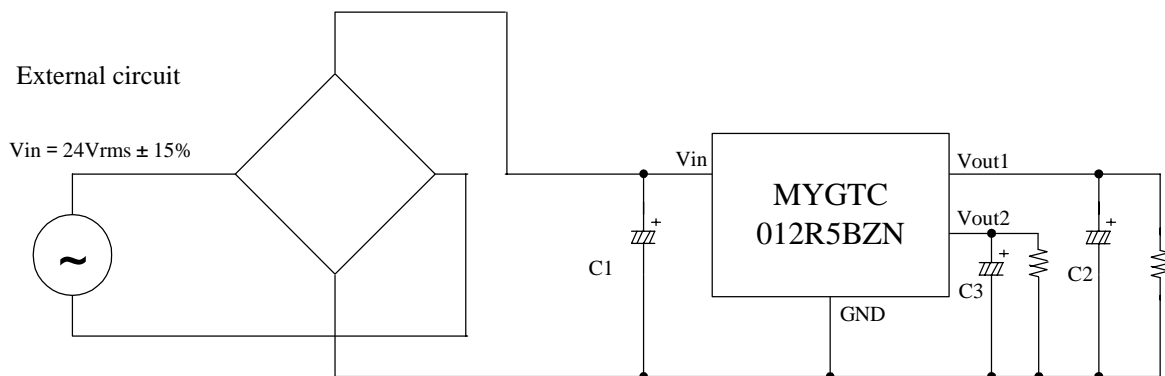


- C1 : 680 μ F/50V Low Impedance Aluminum Electrolytic Capacitor (EKZE500ETD681MJ30S
NIPPON CHEMI-CON)
C2,C3 : 680 μ F/16V Low Impedance Aluminum Electrolytic Capacitor (EKZE160ETD681MJ16S
NIPPON CHEMI-CON)
C4,5 : 0.1 μ F

Please make sure to place C1~C3 nearby input and output terminal of DC-DC converter.

INPUT/OUTPUT ALUMINUM ELECTROLYTIC CAPACITOR FOR FULL-WAVE RECTIFIER (REFERENCE)

* When input is AC24V \pm 15% 50Hz or 60Hz full-wave rectifier, please refer following external circuit.

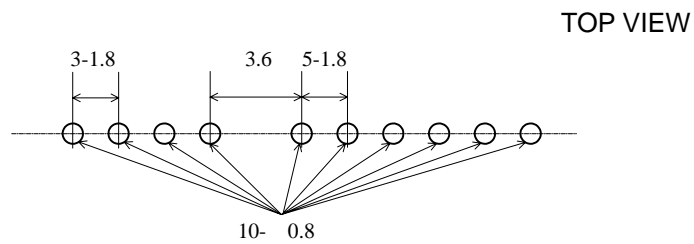


- C1 : 680 μ F/50V Low Impedance Aluminum Electrolytic Capacitor (EKZE500ETD681MJ30S
NIPPON CHEMI-CON)
C2,C3 : 680 μ F/16V Low Impedance Aluminum Electrolytic Capacitor (EKZE160ETD681MJ16S
NIPPON CHEMI-CON)

⚠ **Note:**

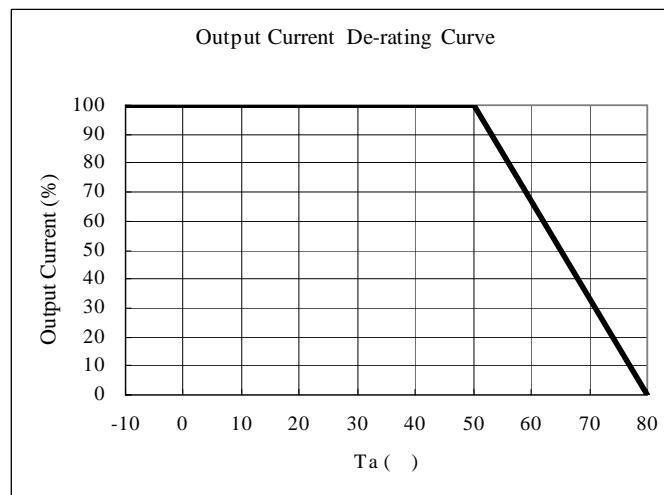
1. This datasheet is downloaded from the website of Murata Manufacturing co., ltd. Therefore, it's specifications are subject to change or our products in it may be discontinued without advance notice. Please check with our sales representatives or product engineers before ordering.
2. This datasheet has only typical specifications because there is no space for detailed specifications. Therefore, please approve our product specifications or transact the approval sheet for product specifications before ordering.

FOOT PRINT DIMENSIONS



Unit 【mm】

THERMAL DERATING



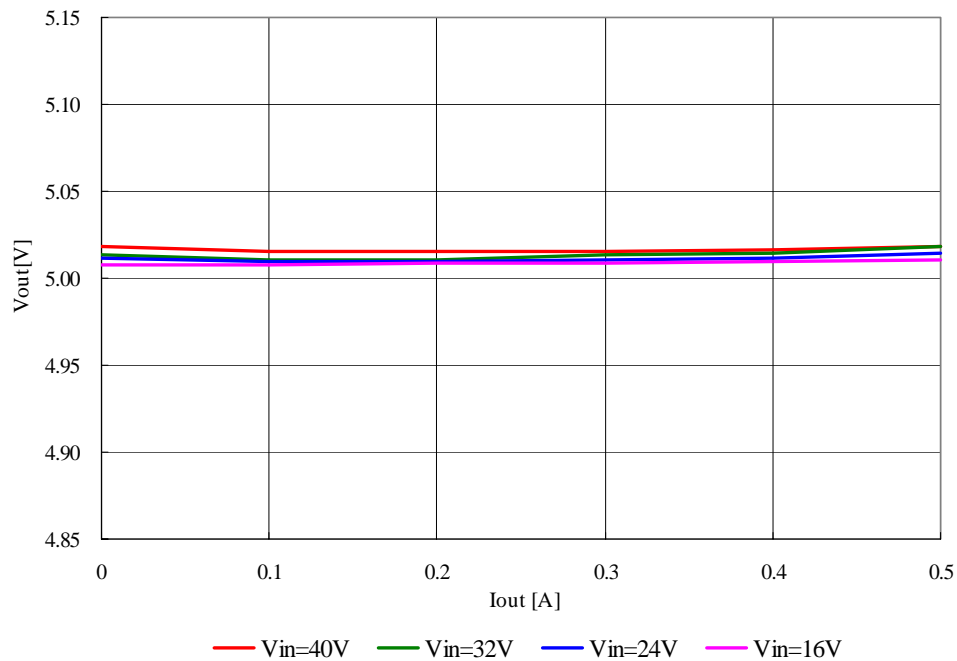
⚠ Note:

1. This datasheet is downloaded from the website of Murata Manufacturing co., ltd. Therefore, it's specifications are subject to change or our products in it may be discontinued without advance notice. Please check with our sales representatives or product engineers before ordering.
2. This datasheet has only typical specifications because there is no space for detailed specifications. Therefore, please approve our product specifications or transact the approval sheet for product specifications before ordering.

OUTPUT VOLTAGE (Ta=25°C)

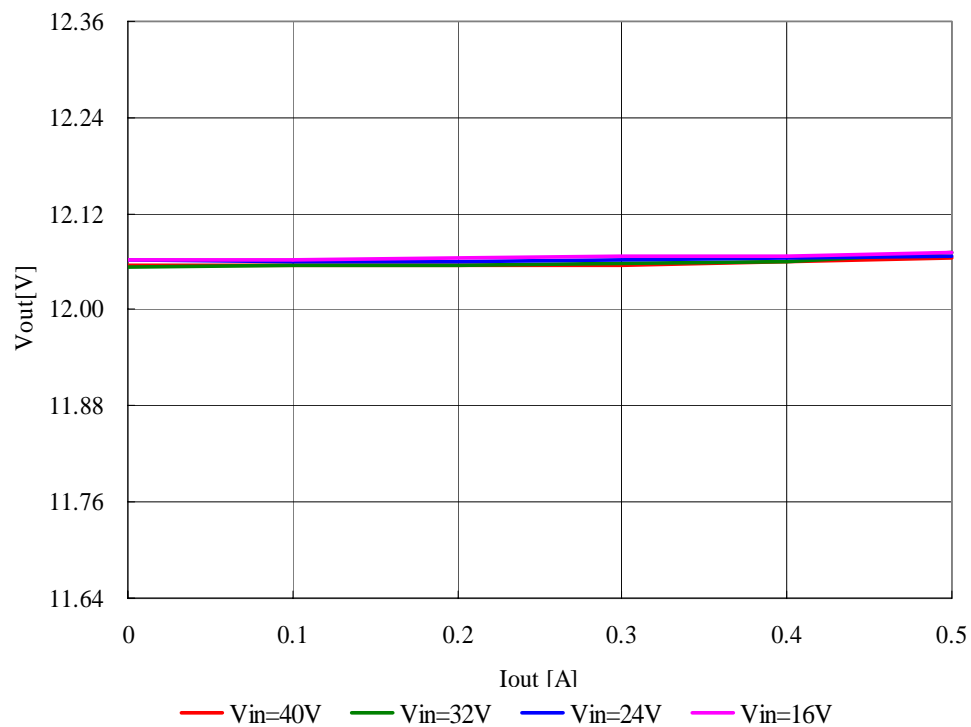
Vout1

MYGTC012R5BZN Characteristics
Vout vs Iout



Vout2

MYGTC012R5BZN Characteristics
Vout vs Iout

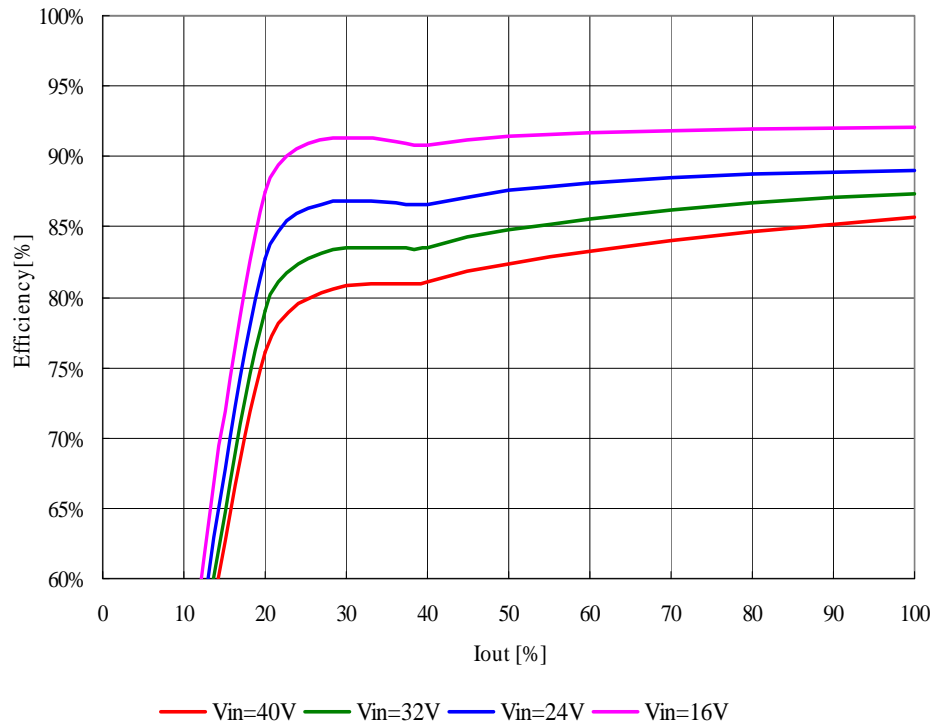


Note:

1. This datasheet is downloaded from the website of Murata Manufacturing co., ltd. Therefore, it's specifications are subject to change or our products in it may be discontinued without advance notice. Please check with our sales representatives or product engineers before ordering.
2. This datasheet has only typical specifications because there is no space for detailed specifications. Therefore, please approve our product specifications or transact the approval sheet for product specifications before ordering.

EFFICIENCY (Ta=25°C)

MYGTC012R5BZN Characteristics
Efficiency vs Iout



⚠ **Note:**

1. This datasheet is downloaded from the website of Murata Manufacturing co., ltd. Therefore, it's specifications are subject to change or our products in it may be discontinued without advance notice. Please check with our sales representatives or product engineers before ordering.
2. This datasheet has only typical specifications because there is no space for detailed specifications. Therefore, please approve our product specifications or transact the approval sheet for product specifications before ordering.