

DC-DC Converter Short Form

MYSSM3R31ECEN (High Efficiency & Small Size POL)

Features

- 24V Input, 3.3V Output
(High Efficiency & Small Size surface mount)
- Low Ripple Voltage (15mVpp typ.)
- Shield case type
- ON/OFF control function(Negative Logic)
- Short circuit protection



GENERAL SPECIFICATIONS (Ta=25°C)

Item	Symbol	Condition	MIN.	TYP.	MAX.	UNIT	
Input Voltage	Vin		19.2	24.0	28.8	V	
Output Voltage	Vout	Vin=19.2~28.8V, Io=0~1.5A	3.201	3.30	3.399	V	
Output Current	Iout	Vin=19.2~28.8V,	0	-	1.5	A	
Ripple Voltage	Vrpl	Vin=24V, Iout=1.5A, BW=20MHz	-	15	-	mVpp	
Efficiency	EFF	Vin=24V, Iout=1.5A	-	88	-	%	
ON/OFF pin High Voltage	VIH	Vin=24V, Iout=1.5A	OFF	2.5	-	Vin	V
ON/OFF pin Low Voltage	VIL		ON	0	-	0.5	
Protection Output Current	ISCP	Vin=19.2~28.8V,	1.6	-	-	A	
Short Circuit Protection	SCP	If output is shorted to GND, DC-DC Converter shall be operated in a hiccup mode. After the short circuit event has cleared, the output is automatically brought back into regulation.					

Rating

Input Voltage Range

Vin: 0 ~ 30V

ON/OFF: 0 ~ 13.2V

Operating Temperature Range -40°C ~ +85°C

Storage Temperature Range -40°C ~ +85°C

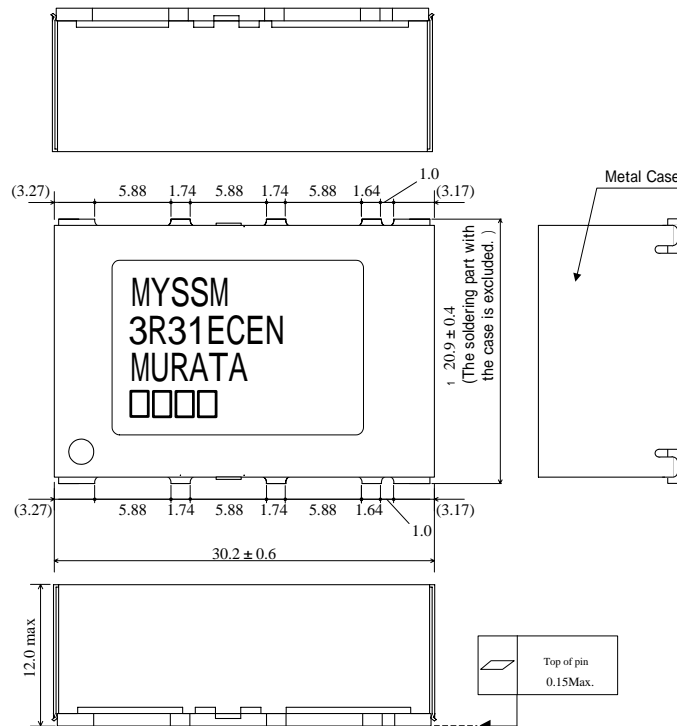
Operating Humidity Range 20% ~ 85% (No water condenses in any cases.)

Storage Humidity Range 10% ~ 90% (No water condenses in any cases.)

⚠ Note:

1. This datasheet is downloaded from the website of Murata Manufacturing co., ltd. Therefore, it's specifications are subject to change or our products in it may be discontinued without advance notice. Please check with our sales representatives or product engineers before ordering.
2. This datasheet has only typical specifications because there is no space for detailed specifications. Therefore, please approve our product specifications or transact the approval sheet for product specifications before ordering.

DIMENSIONS



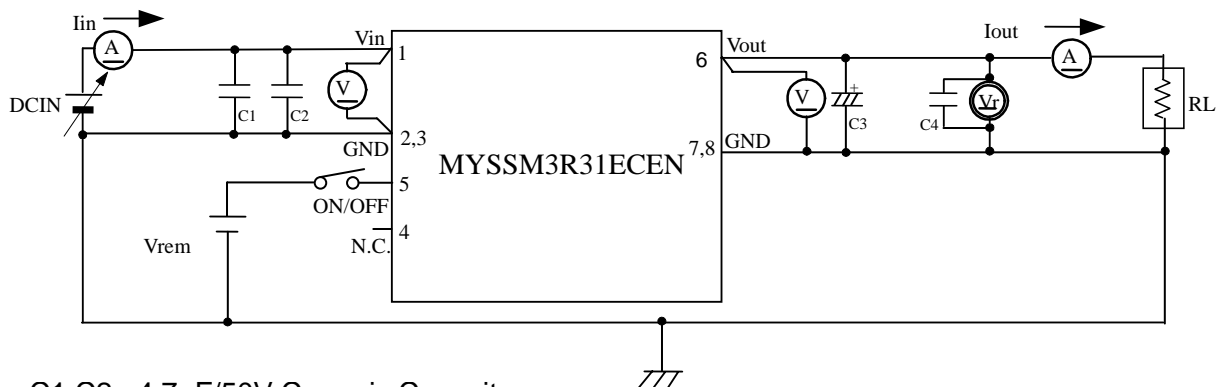
【Unit : mm】

Tolerance $\pm 0.3\text{mm}$

Tolerance is not accumulated.

Pin No.	Symbol	Function
1	Vin	Input
2	GND	GND
3	GND	GND
4	N.C.	N.C. (Internally used)
5	ON/OFF	Remote ON/OFF
6	Vout	Output
7	GND	GND
8	GND	GND

TEST CIRCUIT

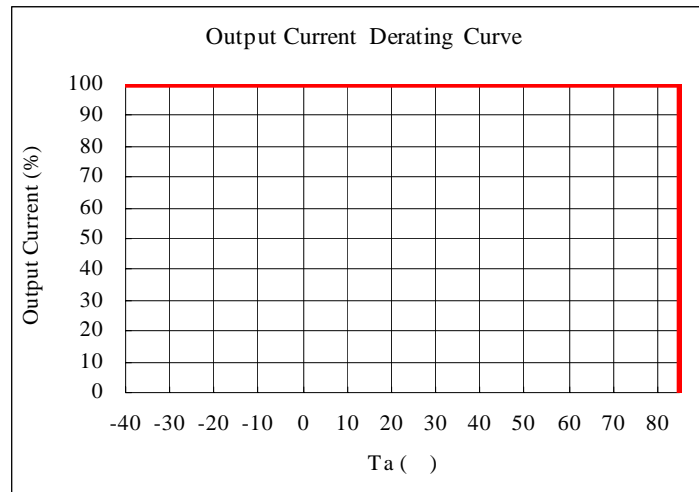
C1,C2 : 4.7 μF /50V Ceramic CapacitorC3 : 100 μF /6.3V Conductive Polymer Aluminum Capacitor
(APXA6R3ARA101MF55G :Nippon Chemi-con)C4 : 0.1 μF Ceramic Capacitor

Please make sure to place C1,C2 and C3 nearby input and output terminal of DC-DC converter.

⚠ Note:

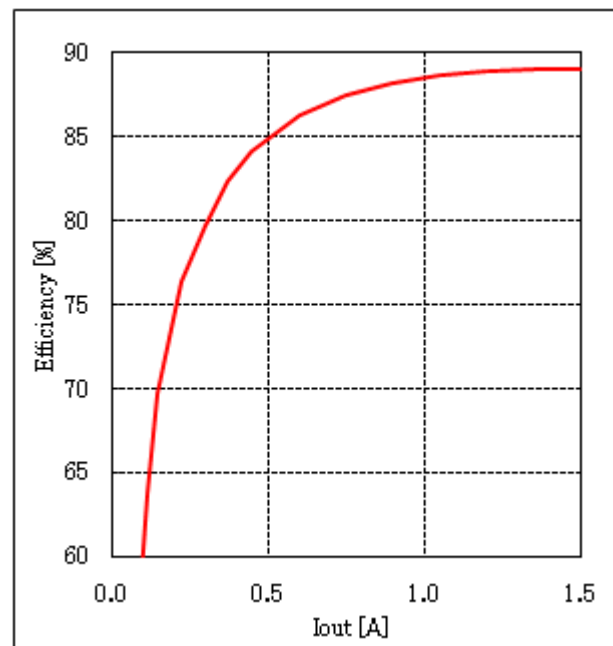
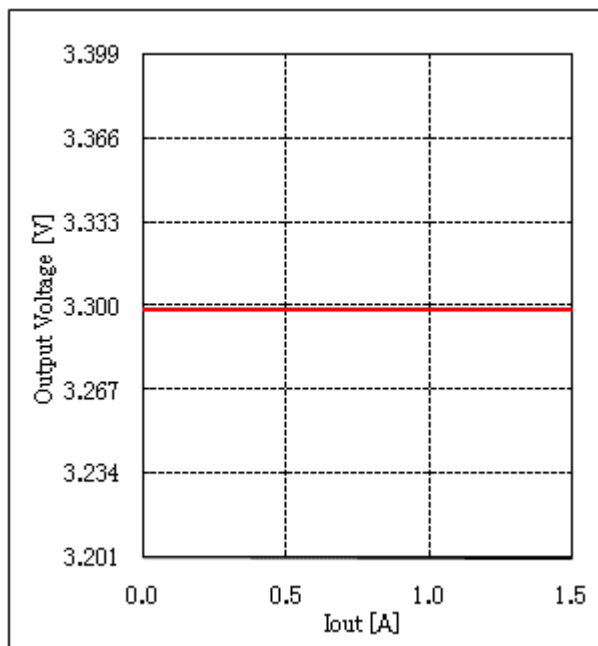
1. This datasheet is downloaded from the website of Murata Manufacturing co., ltd. Therefore, it's specifications are subject to change or our products in it may be discontinued without advance notice. Please check with our sales representatives or product engineers before ordering.
2. This datasheet has only typical specifications because there is no space for detailed specifications. Therefore, please approve our product specifications or transact the approval sheet for product specifications before ordering.

THERMAL DERATING



TYPICAL ELECTRIC CHARACTERISTICS (Ta=25°C)

Vout=3.3V



⚠ Note:

1. This datasheet is downloaded from the website of Murata Manufacturing co., ltd. Therefore, it's specifications are subject to change or our products in it may be discontinued without advance notice. Please check with our sales representatives or product engineers before ordering.
2. This datasheet has only typical specifications because there is no space for detailed specifications. Therefore, please approve our product specifications or transact the approval sheet for product specifications before ordering.