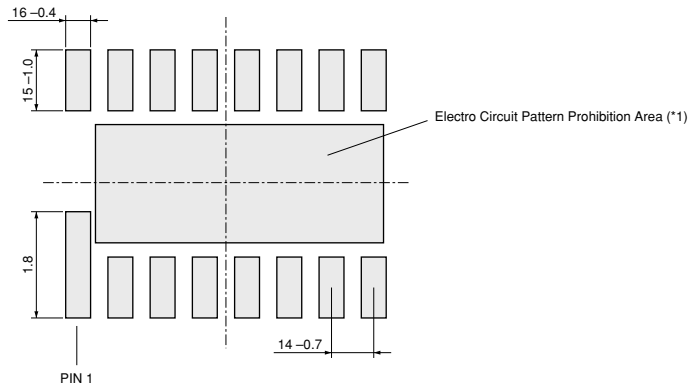
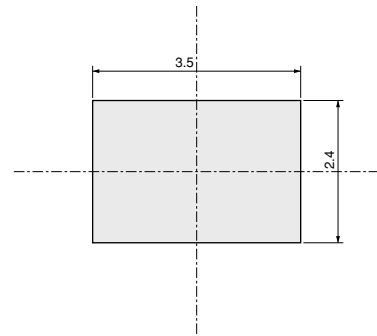


The Land Pattern Dimensions for SMD. (1<sup>st</sup> layer)



The GND Pattern for Electric Shield. (2<sup>nd</sup> layer) (\*2)



(in mm)

(\*1) Do not make the electro circuit pattern at the prohibition area to prevent contact with the central terminals of product's back side and to prevent interference with the other signal.  
(Prohibition area: the central hatching area at 1<sup>st</sup> layer)

(\*2) Please make the GND pattern for electric shield (2<sup>nd</sup> layer) to reduce interference with the other signal.

\* Mechanical stress to the mounted board, such as bending and pushing, affects the zero-rate level of the product. Zero-rate level can change slightly at the moment when mechanical stress is being changed.  
If the hardness of mounted board is high, the zero-rate level changes very little, and the influence of the zero-rate level is changed by the condition of fixed position and shape of the mounted board.  
Therefore, please ensure that your product has been evaluated in view of your specifications with our product being mounted to your product.